



RECEPTACLES

- 90-93 Huskee™
- 91 SuperKan™
- 9499 Colossus®
- 95 King Kan®
- 95 Corner'Round™
- 96-97 Roun', Flat', Funnel' Tops
- 97 Step-On
- 97-98 Wall Hugger™
- 99 Swingline™
- 99-100 Ash Receptacles & Sand Urns
- 100 UL Classified
- 101-105 Steeline™
- 101 Commercial Plastic
- 101 Tilt-N-Wheel™
- 102-105 Recycle

Huskee™ Round & Lids

HUSKEE™ ROUND

Molded of engineered resins with seamless construction, the Huskee™ is a strong, long lasting receptacle used by virtually every industry. From food prep to foundries, from refuse to bio-hazard waste, the Huskee™ keeps on working. Stackable with lid on, nestable with lid off.

For Huskee™ Accessories, see page 92.

Available in a Recycle model, see page 102 for details. 



Built-in Huskee™ Bag Cinch eliminates the need to tie knots in the polyliner to keep it secure around the receptacle rim! Available on 32, 44 and 55 gallon sizes.



Brand	Item Number	Capacity	Color	Pack Case	Case Weight	Case Cube
CMC	*1001GY	10 gal.	● Grey	6	19.14 lbs.	5.400
CMC	*1001WH	10 gal.	○ White	6	19.14 lbs.	5.400
CMC	*2000BL	20 gal.	● Blue	6	38.76 lbs.	11.220
CMC	*2000GY	20 gal.	● Grey	6	38.76 lbs.	11.220
CMC	*2000WH	20 gal.	○ White	6	38.76 lbs.	11.220
CMC	*3200BL	32 gal.	● Blue	6	57.60 lbs.	16.690
CMC	*3200GY	32 gal.	● Grey	6	57.60 lbs.	16.690
CMC	*3200GY BP	32 gal.	● Grey	48 / Bulk	423.84 lbs.	105.120
CMC	*3200RD	32 gal.	● Red	6	57.60 lbs.	16.690
CMC	*3200WH	32 gal.	○ White	6	57.60 lbs.	16.690
CMC	*3200YW	32 gal.	● Yellow	6	57.60 lbs.	16.690
CMC	*4444BL	44 gal.	● Blue	4	50.48 lbs.	21.040
CMC	*4444GY	44 gal.	● Grey	4	50.48 lbs.	21.040
CMC	*4444GY BP	44 gal.	● Grey	32 / Bulk	392.32 lbs.	125.120
CMC	*4444RD	44 gal.	● Red	4	50.48 lbs.	21.040
CMC	*4444WH	44 gal.	○ White	4	50.48 lbs.	21.040
CMC	*4444YW	44 gal.	● Yellow	4	50.48 lbs.	21.040
CMC	5500GY	55 gal.	● Grey	3	52.44 lbs.	21.720

*Items are NSF® Listed

Huskee™ Round Lids

Brand	Item Number	Fits	Color	Pack Case	Case Weight	Case Cube
CMC	*1002GY	10 gal.	● Grey	6	5.40 lbs.	1.200
CMC	*1002WH	10 gal.	○ White	6	5.40 lbs.	1.200
CMC	*2001GY	20 gal.	● Grey	6	10.20 lbs.	2.280
CMC	*2001WH	20 gal.	○ White	6	10.20 lbs.	2.280
CMC	*3201GY	32 gal.	● Grey	6	13.80 lbs.	3.240
CMC	*3201RD	32 gal.	● Red	6	13.80 lbs.	3.240
CMC	*3201WH	32 gal.	○ White	6	13.80 lbs.	3.240
CMC	*3201YW	32 gal.	● Yellow	6	13.80 lbs.	3.240
CMC	*4445GY	44 gal.	● Grey	4	11.24 lbs.	2.560
CMC	*4445RD	44 gal.	● Red	4	11.24 lbs.	2.560
CMC	*4445WH	44 gal.	○ White	4	11.24 lbs.	2.560
CMC	*4445YW	44 gal.	● Yellow	4	11.24 lbs.	2.560
CMC	5501GY	55 gal.	● Grey	3	12.75 lbs.	3.840

*Items are NSF® Listed



MEETS
OSHA
REQUIREMENTS



"INEDIBLE" HUSKEE™ ROUND

32 and 44 gallon Huskee™ pre-printed with "Inedible". Lettering is 3" high.

Brand	Item Number	Capacity	Color	Pack Case	Case Weight	Case Cube
CMC	*3200GYINED	32 gal.	● Grey	48/Bulk	423.84 lbs.	105.120
CMC	*4444GYINED	44 gal.	● Grey	32/Bulk	392.32 lbs.	125.120

*Items are NSF® Listed



SuperKan™

SUPERKAN™ MATERIAL HANDLER

The Huskee™ SuperKan™ Material Handler is the strongest, safest and smartest receptacle available on the market today.

Brand	Item Number	Capacity	Style	Color	Pack Case	Case Weight	Case Cube
CMC	*4442BK	44 gal.	Material Handler	● Black	4	54.00 lbs.	25.010

*Items are NSF® Listed



When used with
Continental® Dome Top



NEW! SUPERKAN™ BACKSAVER

This receptacle is everything the standard Huskee™ Round is, and more! Internal vent ribs, which break the vacuum caused when removing a poly liner, were incorporated into the design, making it the easiest receptacle to use.

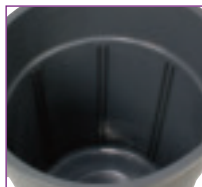
Brand	Item Number	Capacity	Style	Color	Pack Case	Case Weight	Case Cube
CMC	3210GY	32 gal.	BackSaver	● Grey	4	35.50 lbs.	18.407
CMC	4410GY	44 gal.	BackSaver	● Grey	3	38.75 lbs.	20.972

Both SuperKan™ receptacles are compatible with the Huskee™ Round Dolly, Caddy Bag, Maid Caddy, 32 or 44 gallon Huskee™ Round Lid, Huskee™ Dome and Funnel Tops.



SAFER!

The National Safety Council puts the total cost of work injuries at \$121 billion annually, and the cost per disabling injury at \$26,000, and growing. Back injuries are 20% of all claims. The SuperKan™ BackSaver (3210GY & 4410GY) uses internal, ergonomic lift vents to break the vacuum created when removing a polyliner, resulting in reduced effort and reduced risk of back injury.



Built-in Huskee™ Bag Cinch eliminates the need to tie knots in the polyliner to keep it secure around the receptacle rim!

Huskee™ Accessories

HUSKEE™ MAID CADDY



This handy Huskee™ accessory has a convenient handle to raise and carry or collapse out of the way. Fits on Round or Square Huskee™ receptacles and the 50 gallon Tilt-N-Wheel™.

Brand	Item Number	Color	Pack Case	Case Weight	Case Cube
CMC	3155	● Grey	4	12.50 lbs.	2.130

HUSKEE™ CADDY BAG



Add this adjustable nine pocket caddy bag to a Round or Square Huskee™ on a dolly and you've got a durable cleaning system ready to make the rounds. Made of nylon reinforced PVC for years of reliable service.

Brand	Item Number	Color	Pack Case	Case Weight	Case Cube
CMC	3175	● Yellow	6	6.92 lbs.	2.200

HUSKEE™ ROUND DOLLY

The twist-on, twist-off Round Dolly converts a stationary Huskee™ into a mobile hard working tool. It fits the 20, 32, 44 and 55 gallon Huskee™ Round and features five, 3" non-marking swivel casters.



Brand	Item Number	Color	Pack Case	Case Weight	Case Cube
CMC	3255	● Black	2	17.06 lbs.	1.840

Huskee™ Covers

HUSKEE™ DOME TOP

The economic answer wherever large refuse collection in public places is required. Conveniently sized to fit our 32, 44 and 55 gallon Huskee™ receptacles. The 44 gallon model Dome Top also fits 55 gallon metal drums. The wide rim and tight fitting door with rain deflector keeps debris and odors in and rain and pests out.



Brand	Item Number	Fits	Color	Pack Case	Case Weight	Case Cube
CMC	3232BL	32 gal.	● Blue	2	12.84 lbs.	7.870
CMC	3232BK	32 gal.	● Black	2	12.84 lbs.	7.870
CMC	3232GY	32 gal.	● Grey	2	12.84 lbs.	7.870
CMC	3232RD	32 gal.	● Red	2	12.84 lbs.	7.870
CMC	4456BL	44 gal.	● Blue	2	14.72 lbs.	10.070
CMC	4456BK	44 gal.	● Black	2	14.72 lbs.	10.070
CMC	4456GY	44 gal.	● Grey	2	14.72 lbs.	10.070
CMC	4456RD	44 gal.	● Red	2	14.72 lbs.	10.070
CMC	5550BL	55 gal.	● Blue	2	19.36 lbs.	13.030
CMC	5550BK	55 gal.	● Black	2	19.36 lbs.	13.030
CMC	5550GY	55 gal.	● Grey	2	19.36 lbs.	13.030
CMC	5550RD	55 gal.	● Red	2	19.36 lbs.	13.030



When used with
Continental® SuperKan™
Material Handler (4442)

HUSKEE™ TIP TOP LID

Gravity, hands-free opening encourages use and automatically closes to hide trash. No metal parts to rust or break.

Brand	Item Number	Fits	Color	Pack Case	Case Weight	Case Cube
CMC	3231	32 gal.	● Grey	6	25.92 lbs.	5.280



HUSKEE™ FUNNEL TOP

Designed for high volume applications, this open top funnel lid handles indoor applications ranging from food service to industrial.

Brand	Item Number	Fits	Color	Pack Case	Case Weight	Case Cube
CMC	3233GY	32 gal.	● Grey	4	12.20 lbs.	2.640
CMC	4457GY	44 gal.	● Grey	4	14.04 lbs.	3.170



Huskee™ Square

HUSKEE™ SQUARE

These containers are ideal for food handling, hospital, bio-hazard, commercial refuse and recycle collection. All Square Huskee™ receptacles are stackable with lids and nestable without lids. Lids snap and lock in place keeping refuse and odor in, animals and pests out. This container is easy to clean and has a molded in bottom grip for comfortable lifting. Heavy-duty, non-slip handles have drain holes.



Available in a Recycle model, see page 102 for details.

Brand	Item Number	Capacity	Color	Pack Case	Case Weight	Case Cube
CMC	2800GY	32 gal.	● Grey	6	59.64 lbs.	17.220
CMC	2800RD	32 gal.	● Red	6	59.64 lbs.	17.220
CMC	2800WH	32 gal.	○ White	6	59.64 lbs.	17.220
CMC	4000GY	48 gal.	● Grey	4	59.12 lbs.	20.040
CMC	4000RD	48 gal.	● Red	4	59.12 lbs.	20.040
CMC	5000GY	55 gal.	● Grey	4	73.56 lbs.	25.640



HUSKEE™ SQUARE FLAT LID

CMC	2801GY	fits 32 gal.	● Grey	6	17.70 lbs.	3.060
CMC	2801RD	fits 32 gal.	● Red	6	17.70 lbs.	3.060
CMC	2801WH	fits 32 gal.	○ White	6	17.70 lbs.	3.060
CMC	4001GY	fits 48 gal.	● Grey	4	13.40 lbs.	2.400
CMC	4001RD	fits 48 gal.	● Red	4	13.40 lbs.	2.400
CMC	5001GY	fits 55 gal.	● Grey	4	15.48 lbs.	2.680



HUSKEE™ SQUARE DOME TOP LID

Economical answer wherever high volume applications are required. This new Dome Top fits the 55 gallon Square Huskee™ Receptacles.

Brand	Item Number	Fits	Color	Pack Case	Case Weight	Case Cube
CMC	5556GY	55 gal.	● Grey	1	13.30 lbs.	5.900



HUSKEE™ SQUARE DOLLY

The twist-on, twist-off Square Dolly converts a stationary Huskee™ into a mobile, hard-working tool. It fits all Square Huskee™ Receptacles and features four 3", non-marking, swivel casters.

Brand	Item Number	Color	Pack Case	Case Weight	Case Cube
CMC	2803	● Black	2	15.44 lbs.	2.680



HUSKEE™ SQUARE LOCK LID

New lock-lid offers extra tight fit on 32 gallon Square Huskee™. Ideal for bio-medical waste hauling. Four handle design locks on all edges of the Huskee™ for secure locking fit.



Brand	Item Number	Color	Pack Case	Case Weight	Case Cube
CMC	2811RD*	● Red	6	17.70 lbs.	3.060

*Custom item - call for details.

Colossus®

The Colossus® Receptacle is available with four openings, or with two spring loaded doors. Both versions are available as a 45 or 56 gallon receptacle, to meet any capacity requirement. Dual vinyl-coated cable lid stays hold the lid in a vertical position for safe, easy emptying, and help eliminate tipping of the base. Heavy-duty poly liner retainer straps allow the user to secure a poly liner within the container for a clean, professional appearance.

COLOSSUS®

The Colossus® Receptacle with four openings has two large front openings (17 1/2" x 9 1/8" high) and two large side openings (13 3/8" x 8 15/16" high), which can easily accommodate bulky debris like pizza boxes, 32 ounce cups and food service trays - this unit is truly designed for high volume applications! The contoured lid's top surface prevents accumulation of debris and water while providing a unique and visually appealing style.

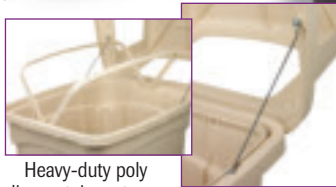
The Colossus® Receptacle with spring-loaded doors is Factory Mutual Approved, because of its doors' tight fit to the lid and the lid fit to the base. The heavy-duty door springs keep doors closed tight to keep odors in and pests out.

Available in a Recycle model, see page 103 for details.



6564BE

6452BN



Heavy-duty poly liner retainer straps

Dual Vinyl-coated cable lid stays



*Colossus® Receptacle with two spring loaded doors only

Brand	Item Number	Item	Capacity	Color	Pack Case	Case Weight	Case Cube
CMC	*6452BE	Two Doors	45 gal.	● Beige	1	41.00 lbs.	18.760
CMC	*6452BN	Two Doors	45 gal.	● Brown	1	41.00 lbs.	18.760
CMC	6454BE	Four Openings	45 gal.	● Beige	1	37.00 lbs.	18.760
CMC	6454BN	Four Openings	45 gal.	● Brown	1	37.00 lbs.	18.760
CMC	*6562BE	Two Doors	56 gal.	● Beige	1	58.00 lbs.	21.010
CMC	*6562BN	Two Doors	56 gal.	● Brown	1	58.00 lbs.	21.010
CMC	6564BE	Four Openings	56 gal.	● Beige	1	44.00 lbs.	21.010
CMC	6564BN	Four Openings	56 gal.	● Brown	1	44.00 lbs.	21.010

COLOSSUS® ACCESSORIES

Ash Tray Top and Tray Top easily attach to any Colossus® Receptacle. Rigid plastic liners have handle holes for easy lifting and dumping. Weighted Base can be filled with sand or gravel, adding approximately 17 lbs. of weight for stability, when unit is used in outdoor applications.



6456BK

Weighted Base can be filled with sand or gravel, adding approximately 17 pounds of weight for stability when unit is used outdoors.



6457BK

Optional Tray Top is designed to accommodate food service trays up to 12.5" x 17.5"



6458BK

Optional Ash Tray Top



6451BK / 6561BK

Rigid Plastic Liner

Brand	Item Number	Item	Size	Color	Pack Case	Case Weight	Case Cube
CMC	6451BK	Rigid Liner / 45 gal.	21 1/2" x 20 1/2" x 24 1/4"	● Black	1	12.20 lbs.	6.660
CMC	6561BK	Rigid Liner / 56 gal.	21 1/2" x 20 1/2" x 29 1/2"	● Black	1	13.68 lbs.	7.830
CMC	6456BK	Weighted Base	15 3/4" x 13 1/4" x 3"	● Black	1	3.20 lbs.	0.420
CMC	6457BK	Tray Top	18 1/2" x 14 5/8" x 2 3/8"	● Black	1	2.00 lbs.	0.430
CMC	6458BK	Ash Tray Top	13 1/2" x 13 1/4" x 2 5/8"	● Black	1	1.50 lbs.	0.340

King Kan®

KING KAN®

Structural plastic allows the King Kan® to be used for both indoor and outdoor applications. Won't dent, crack, chip or warp even under rough conditions. Add optional 3" non-marking casters to the 35/50 gallon King Kan® for increased mobility. King Kan® lids feature two heavy-duty plated steel hinges, which eliminate awkward lifting, removing and repositioning of the lid. The lid sits tightly on the base to control odors, insects and pests.

Brand	Item Number	Fits	Color	Pack Case	Case Weight	Case Cube
CMC	*5735BE	35 gal.	● Beige	1	35.00 lbs.	7.720
CMC	*5735BN	35 gal.	● Brown	1	35.00 lbs.	7.720
CMC	*5750BE	50 gal.	● Beige	1	42.00 lbs.	9.970
CMC	*5750BN	50 gal.	● Brown	1	42.00 lbs.	9.970
CMC	5765BN	65 gal.	● Brown	1	65.63 lbs.	14.480



*5735 and 5750 are FM Approved

KING KAN® ACCESSORIES

The Leg Kit is 2" high, with four pre-drilled epoxy coated steel legs. The rigid plastic liner has two handle holes for easy removal. Also available, a 54 gallon poly bag.

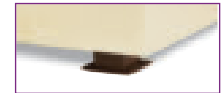
Brand	Item Number	Item	Fits	Pack Case	Case Weight	Case Cube
CMC	6451BK	Rigid Plastic Liner	50/65 gal.	1	35.00 lbs.	7.720
CMC	5766L	Leg Kit	All sizes	1	35.00 lbs.	7.720
CMC	1924	Poly Bag	65 gal.	1	65.63 lbs.	14.480



6451BK



1924



5766L

Corner'Round™

CORNER'ROUND™

Fits into corners to utilize space. This durable plastic design will not chip, rust, crack, peel or fade. Its 21 gallon capacity and extra large opening make it ideal for school cafeterias, atriums, foyers, food courts, airport terminals, plazas, convention centers, etc. Choose between a securing bag rim type or a hooded domed top lid. Complete product information on the dolly which accommodates four receptacles is available on page 102.



Available in a Recycle model, see page 102 for details.

Brand	Item Number	Item	Capacity	Color	Pack Case	Case Weight	Case Cube
CMC	8324BE	Rim	21 gal.	● Beige	2	22.50 lbs.	6.340
CMC	8324BK	Rim	21 gal.	● Black	2	22.50 lbs.	6.340
CMC	8324BN	Rim	21 gal.	● Brown	2	22.50 lbs.	6.340
CMC	8324GY	Rim	21 gal.	● Grey	2	22.50 lbs.	6.340
CMC	8325BE	Dome	21 gal.	● Beige	1	14.00 lbs.	4.810
CMC	8325BK	Dome	21 gal.	● Black	1	14.00 lbs.	4.810
CMC	8325BN	Dome	21 gal.	● Brown	1	14.00 lbs.	4.810
CMC	8325GY	Dome	21 gal.	● Grey	1	14.00 lbs.	4.810
CMC	8325-D	Dolly	---	● Black	1	21.30 lbs.	5.160



*8325-D - detailed information on page 102.

Roun', Flat' & Funnel'Tops



1432

1435



FLAT'TOP & ASH'TOP

These receptacles have dual self-closing doors to keep debris and odor inside, pests out. The two door design encourages use. Removable top allows easy access with no clumsy straps. Unit can be positioned for access to both sides. Factory Mutual fire resistant design contains and extinguishes fires.

Brand	Item Number	Capacity	Color	Pack Case	Case Weight	Case Cube
CMC	1432BE	24 gal.	● Beige	1	23.50 lbs.	7.970
CMC	1432BK	24 gal.	● Black	1	23.50 lbs.	7.970
CMC	1432BN	24 gal.	● Brown	1	23.50 lbs.	7.970
CMC	1432GY	24 gal.	● Grey	1	23.50 lbs.	7.970
CMC	1435BE	24 gal.	● Beige	1	25.00 lbs.	7.970
CMC	1435BK	24 gal.	● Black	1	25.00 lbs.	7.970
CMC	1435BN	24 gal.	● Brown	1	25.00 lbs.	7.970
CMC	1435GY	24 gal.	● Grey	1	25.00 lbs.	7.970



FUNNEL'TOP

This big mouth receptacle encourages use because of its appealing open, Funnel'Top design. With absolutely no metal parts, these containers are safe for secure areas in hospitals or prison systems. They are available in color choices to compliment any decor. The unique "key-way" feature and shoulder design allows poly liner to be secured, hiding unsightly 'bag skirt'. Plus, the built-in lock ring secures Funnel'Top from theft or high winds.

Brand	Item Number	Capacity	Color	Pack Case	Case Weight	Case Cube
CMC	1430BE	24 gal.	● Beige	1	23.00 lbs.	6.520
CMC	1430BK	24 gal.	● Black	1	23.00 lbs.	6.520
CMC	1430BN	24 gal.	● Brown	1	23.00 lbs.	6.520
CMC	1430GY	24 gal.	● Grey	1	23.00 lbs.	6.520



ROUN'TOP™

With absolutely no metal parts, these containers are safe for secure areas in hospitals or prison systems. The Roun'Top™ is Factory Mutual Approved, designed to contain and extinguish a fire, assuring safety. Available in either 18 or 24 gallon sizes to fit any need. Removable top allows easy access. Unique "key-way" notch secures poly-liners with no clumsy straps to snag liners. Weather-proof design allows outside use with confidence.

Brand	Item Number	Liner	Capacity	Color	Pack Case	Case Weight	Case Cube
CMC	1305BE	None	18 gal.	● Beige	1	17.50 lbs.	5.520
CMC	1305BK	None	18 gal.	● Black	1	17.50 lbs.	5.520
CMC	1305BN	None	18 gal.	● Brown	1	17.50 lbs.	5.520
CMC	1305GY	None	18 gal.	● Grey	1	17.50 lbs.	5.520
CMC	1307BE	Rigid Plastic	15 gal.	● Beige	1	24.50 lbs.	5.520
CMC	1307BK	Rigid Plastic	15 gal.	● Black	1	24.50 lbs.	5.520
CMC	1307BN	Rigid Plastic	15 gal.	● Brown	1	24.50 lbs.	5.520
CMC	1307GY	Rigid Plastic	15 gal.	● Grey	1	24.50 lbs.	5.520
CMC	1425BE	None	24 gal.	● Beige	1	23.50 lbs.	7.970
CMC	1425BK	None	24 gal.	● Black	1	23.50 lbs.	7.970
CMC	1425BN	None	24 gal.	● Brown	1	23.50 lbs.	7.970
CMC	1425GY	None	24 gal.	● Grey	1	23.50 lbs.	7.970
CMC	1427BE	Rigid Plastic	21 gal.	● Beige	1	39.50 lbs.	7.970
CMC	1427BK	Rigid Plastic	21 gal.	● Black	1	39.50 lbs.	7.970
CMC	1427BN	Rigid Plastic	21 gal.	● Brown	1	39.50 lbs.	7.970
CMC	1427GY	Rigid Plastic	21 gal.	● Grey	1	39.50 lbs.	7.970



DESIGN-LINE ROUN"TOP™

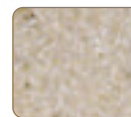
These receptacles have all the features of the standard Roun"Top™, but are now available in four granite finishes that provide the architectural appeal of a concrete or stone receptacle without the excessive weight or cost. Available in 18 or 24 gallon sizes to fit any need. Factory Mutual and CSFM Approved.

Brand	Item Number	Capacity	Color	Pack Case	Case Weight	Case Cube
CMC	1305BKS	18 gal.	● Blackstone	1	17.50 lbs.	5.520
CMC	1305BNS	18 gal.	● Brownstone	1	17.50 lbs.	5.520
CMC	1305GYS	18 gal.	● Greystone	1	17.50 lbs.	5.520
CMC	1305SDS	18 gal.	● Sandstone	1	17.50 lbs.	5.520
CMC	1425BKS	24 gal.	● Blackstone	1	23.50 lbs.	7.970
CMC	1425BNS	24 gal.	● Brownstone	1	23.50 lbs.	7.970
CMC	1425GYS	24 gal.	● Greystone	1	23.50 lbs.	7.970
CMC	1425SDS	24 gal.	● Sandstone	1	23.50 lbs.	7.970

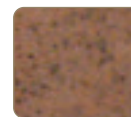


Step-On

The sturdy step pedal enables hands-free opening and closing of the receptacle lid, which makes it more sanitary. Aids in conforming to the OSHA regulation 1910.1030 known as "Occupational Exposure to Bloodborne Pathogens". Additionally, this line of receptacles is Factory Mutual (FM) and California State Fire Marshal (CSFM) approved for fire safety. Lid closes securely to receptacle base, which keeps odors contained. Lid attachment is covered on top so dirt does not collect in hinge. 23 gallon version has covered wheels for mobility and cleanliness. Unique "key-way" notch holds standard size polyliners.



Sandstone



Brownstone



Greystone



Blackstone

STEP-ON

Allows for convenient and hygienic disposal of waste. Step pedal provides hands-free use. Can be used with standard poly liners. 23 gallon has wheels and wire frame for ease of mobility.

Brand	Item Number	Capacity	Color	Pack Case	Case Weight	Case Cube
CMC	18WH	18 gal.	○ White	1	11.00 lbs.	4.800
CMC	18BE	18 gal.	● Beige	1	11.00 lbs.	4.800
CMC	18RD	18 gal.	● Red	1	11.00 lbs.	4.800
CMC	23WH	23 gal.	○ White	1	13.00 lbs.	5.920
CMC	23BE	23 gal.	● Beige	1	13.00 lbs.	5.920
CMC	23RD	23 gal.	● Red	1	13.00 lbs.	5.920



12



23



RECEPTACLE LINERS

CMC	15	18 gal.	● Black	1	5.80 lbs.	3.000
CMC	19	23 gal.	● Black	1	7.60 lbs.	3.780

Wall Hugger™

HALF ROUND WALL HUGGER™

The Half Round completes the popular Wall Hugger™ Line. Its smaller footprint and impressive 21 gallon capacity is ideal for today's space-efficient workplace. The rounded front and sides allow use where other square or rectangular containers would interfere with traffic. The Half Rounds may be suspended off of the floor with our 8319 Mounting Bracket, found on page 98.



Available in a Recycle model, see page 104 for details.

Brand	Item Number	Capacity	Color	Pack Case	Case Weight	Case Cube
CMC	8321BE	21 gal.	● Beige	2	15.20 lbs.	8.780
CMC	8321GY	21 gal.	● Grey	2	15.20 lbs.	8.780



WALL HUGGER™

Continental® has updated the look of the Wall Hugger™, creating a sleek and attractive design that holds either 16 or 23 gallons of waste, but protrudes less than one foot from the wall! The smooth, seamless design provides prolonged life and promotes easy cleaning. The expanded line now includes a version with built-in handles which provide ease of transport and a secure area to grasp when lifting and dumping. The addition of a Wall Hugger™ Drop Shot Lid helps to conceal waste while providing an inviting, enlarged opening for waste disposal. The 8 1/4" x 16 3/4" opening is the largest available in a Wall Hugger™ style receptacle!

Available in a Recycle model, see page 103 for details. 



Built-in Bag Cinch eliminates the need to tie knots in the polyliner to keep it secure around the receptacle rim!



7325GY

7315GY



T7318BNBE



8319



8320

8320-4

Brand	Item Number	Item	Color	Pack Case	Case Weight	Case Cube
CMC	8316BE	16 gal.	● Beige	4	22.50 lbs.	5.050
CMC	8316BK	16 gal.	● Black	4	22.50 lbs.	5.050
CMC	8316BN	16 gal.	● Brown	4	22.50 lbs.	5.050
CMC	8316GY	16 gal.	● Grey	4	22.50 lbs.	5.050
CMC	H8316BE	16 gal. w/handles	● Beige	4	23.20 lbs.	5.680
CMC	H8316BK	16 gal. w/handles	● Black	4	23.20 lbs.	5.680
CMC	H8316BN	16 gal. w/handles	● Brown	4	23.20 lbs.	5.680
CMC	H8316GY	16 gal. w/handles	● Grey	4	23.20 lbs.	5.680
CMC	8322BE	23 gal.	● Beige	4	27.10 lbs.	6.200
CMC	8322BK	23 gal.	● Black	4	27.10 lbs.	6.200
CMC	8322BN	23 gal.	● Brown	4	27.10 lbs.	6.200
CMC	8322GY	23 gal.	● Grey	4	27.10 lbs.	6.200
CMC	H8322BE	23 gal. w/handles	● Beige	4	27.75 lbs.	7.150
CMC	H8322BK	23 gal. w/handles	● Black	4	27.75 lbs.	7.150
CMC	H8322BN	23 gal. w/handles	● Brown	4	27.75 lbs.	7.150
CMC	H8322GY	23 gal. w/handles	● Grey	4	27.75 lbs.	7.150

WALL HUGGER™ LIDS

Brand	Item Number	Fits	Color	Pack Case	Case Weight	Case Cube
CMC	7315GY	Lid w/ Handles	● Grey	4	4.00 lbs.	1.000
CMC	7325BE	Drop Shot Lid	● Beige	4	12.50 lbs.	1.600
CMC	7325BK	Drop Shot Lid	● Black	4	12.50 lbs.	1.600
CMC	7325BN	Drop Shot Lid	● Brown	4	12.50 lbs.	1.600
CMC	7325GY	Drop Shot Lid	● Grey	4	12.50 lbs.	1.600
CMC	T7318BNBE	Push Door Lid	● Brown/Beige	4	24.68 lbs.	4.160
CMC	T7318GYGY	Push Door Lid	● Grey/Grey	4	24.68 lbs.	4.160

WALL HUGGER™ MOUNTING BRACKET

Brand	Item Number	Fits	Pack Case	Case Weight	Case Cube
CMC	8319	#8321, 8322, H8322, 8316 & H8316	4	3.64 lbs.	0.040

DOLLIES

The Wall Hugger™ line offers both Single and Quad-Collection Dollies. These attractive, black powder-coated steel Dollies have 3", non-marking, all swivel casters, enabling them to turn any CMC Wall Hugger™ or competitive receptacle into a mobile waste collection system.

Brand	Item Number	Color	Pack Case	Case Weight	Case Cube
CMC	8320	● Black	2	17.00 lbs.	1.650
CMC	8320-4	● Black	1	18.00 lbs.	3.525

Swingline™

SWINGLINE™

Square Swingline™ containers provide 25% more capacity which equates to labor and poly liner savings. The rolled rim provides strength and a convenient area to lift or pull. Reinforced base will take rough commercial use and they nest for easy storage. Compatible with the T1700 Tip Top, 1600 Swing Top or 1702 Drop Shot lids.



Available in a Recycle model, see page 104 for details.

Brand	Item Number	Fits	Color	Pack Case	Case Weight	Case Cube
CMC	25BE	25 gal.	● Beige	4	33.32 lbs.	8.440
CMC	25BN	25 gal.	● Brown	4	33.32 lbs.	8.440
CMC	25GY	25 gal.	● Grey	4	33.32 lbs.	8.440
CMC	32BE	32 gal.	● Beige	4	35.00 lbs.	9.280
CMC	32BN	32 gal.	● Brown	4	35.00 lbs.	9.280
CMC	32GY	32 gal.	● Grey	4	35.00 lbs.	9.280



SWING TOP LID

Swing Top's opening makes refuse disposal easy. Peaked design is counter-weighted and automatically closes to hide trash. Sloped surfaces discourage cigarette and waste accumulation.

Brand	Item Number	Fits	Color	Pack Case	Case Weight	Case Cube
CMC	T1600BE	#25 & #32	● Beige	4	11.88 lbs.	4.160
CMC	T1600BN	#25 & #32	● Brown	4	11.88 lbs.	4.160
CMC	T1600GY	#25 & #32	● Grey	4	11.88 lbs.	4.160



TIP TOP LID

Gravity, hands-free opening encourages use and automatically closes to hide trash. No metal parts to rust or break.

Brand	Item Number	Fits	Color	Pack Case	Case Weight	Case Cube
CMC	T1700BE	#25 & #32	● Beige	4	11.80 lbs.	2.240
CMC	T1700BN	#25 & #32	● Brown	4	11.80 lbs.	2.240
CMC	T1700GY	#25 & #32	● Grey	4	11.80 lbs.	2.240
CMC	T1700WH	#25 & #32	○ White	4	11.80 lbs.	2.240



DROP SHOT LID

Two door, center drop design with counter-weighted flippers opens easily and closes automatically. Large opening will accommodate up to a 16" pizza box, perfect for high volume areas.

Brand	Item Number	Fits	Color	Pack Case	Case Weight	Case Cube
CMC	1702BE	#25 & #32	● Beige	4	17.76 lbs.	3.040
CMC	1702BN	#25 & #32	● Brown	4	17.76 lbs.	3.040
CMC	1702GY	#25 & #32	● Grey	4	17.76 lbs.	3.040



Ash Receptacles & Sand Urns

SMOKING RECEPTACLE

These smoking receptacles are geared toward outdoor use. Galvanized inner liner included.

Brand	Item Number	Item	Color	Pack Case	Case Weight	Case Cube
CMC	887BE	Classic	● Beige	1	8.40 lbs.	3.130
CMC	887GY	Classic	● Grey	1	8.40 lbs.	3.130
CMC	887BK	Classic	● Black	1	8.40 lbs.	3.130
CMC	889	Cactus	● Green/Tan	1	9.16 lbs.	3.130
CMC	892	Lighthouse	● Black/Red/White	1	9.16 lbs.	3.130





ASH RECEPTACLE

These satin chrome ash receptacles mount to the wall. Push button drops debris into liner. Liner included.

Brand	Item Number	Size	Color	Pack Case	Case Weight	Case Cube
CMC	132	3 ¹³ / ₁₆ " x 2 ⁵ / ₁₆ " x 4"	○ Chrome	12	11.04 lbs.	0.840
CMC	650	8 ¹³ / ₁₆ " x 7 ¹ / ₂ " x 9 ⁹ / ₁₆ "	○ Chrome	6	27.72 lbs.	3.720



FLOOR SAND URN

These rugged sand urns are manufactured of structural plastic and include a chrome plated ashtray top. Sand Urns are made to color coordinate with the RounTop™ receptacle line.

Brand	Item Number	Size	Color	Pack Case	Case Weight	Case Cube
CMC	888BK	20" x 10" dia.	● Black	1	7.31 lbs.	1.280
CMC	888BN	20" x 10" dia.	● Brown	1	7.31 lbs.	1.280

LASHCAN TRASH RECEPTACLE & ASHTRAY

Combination sand urn and waste receptacle. This unit is made of structural plastic and includes a galvanized metal liner. Provides an added measure of fire safety when placed together with RounTop™, FunnelTops and FlatTops.

Brand	Item Number	Size	Color	Pack Case	Case Weight	Case Cube
CMC	885BK	23 ¹³ / ₁₆ " x 10" dia.	● Black	1	12.50 lbs.	2.130

COLOSSUS® ASH TRAY TOP

The Ash Tray Top easily attaches to any Colossus® Receptacle without the aid of power tools. Includes four self-tapping screws and a replaceable, chrome-plated ash tray insert.



A complete line of Colossus® Receptacles can be found on page 94.

Brand	Item Number	Size	Color	Pack Case	Case Weight	Case Cube
CMC	6458	13 ¹ / ₂ " x 13 ¹ / ₄ " x 2 ⁵ / ₈ "	● Black	1	1.50 lbs.	0.340

UL Classified Wastebaskets

UL CLASSIFIED RECTANGULAR WASTEBASKET

Required baskets for healthcare and preferred elsewhere for the extra measure of fire safety. Non-metallic wastepaper container, classified by Underwriters Laboratories, Inc., only as to contain burning paper without melting or contributing fuel to the container contents.



Brand	Item Number	Capacity	Color	Pack Case	Case Weight	Case Cube
CMC	2907SD	7 qt.	○ Sand	6	13.56 lbs.	0.780
CMC	2914BK	14 qt.	● Black	6	24.48 lbs.	1.320
CMC	2914SD	14 qt.	○ Sand	6	24.48 lbs.	1.320
CMC	2927BK	27 ³ / ₈ qt.	● Black	6	40.32 lbs.	2.730
CMC	2927BN	27 ³ / ₈ qt.	● Brown	6	40.32 lbs.	2.730
CMC	2927SD	27 ³ / ₈ qt.	○ Sand	6	40.32 lbs.	2.730

Steeline™ Wastebaskets

STEELINE™ WASTEBASKET

Steeline™ Wastebaskets are built for strength and beauty, exceeding industry standards for durability and performance. Fire safe steel adds an additional dimension of safety for protection against fire escalating or spreading. The rolled wire rim, double lock seams, embossed side panels and heavier gauge metal provide extra strength and superior dent resistance. The polyester powder coating process prevents scratches, chipping and rust. With the recessed bottom and metal construction, these containers will not burn or transfer heat to the floor.

Brand	Item Number	Capacity	Color	Pack Case	Case Weight	Case Cube
CMC	71NBK	21 qt.	● Black	6	22.00 lbs.	2.380
CMC	71NBN	21 qt.	● Brown	6	22.00 lbs.	2.380
CMC	71NGY	21 qt.	● Grey	6	22.00 lbs.	2.380
CMC	72NBE	49 qt.	● Beige	3	20.00 lbs.	4.010
CMC	72NGY	49 qt.	● Grey	3	20.00 lbs.	4.010
CMC	75BE	80 qt.	● Beige	3	28.00 lbs.	5.330
CMC	75GY	80 qt.	● Grey	3	28.00 lbs.	5.330



Commercial Plastic Wastebaskets

COMMERCIAL PLASTIC WASTEBASKET

The low profile and sleek, attractive design of these wastebaskets make them the right choice for a variety of applications ranging from classroom, office, commercial or institutional use.



Some sizes available in a Recycle model, see page 104 for details.

Brand	Item Number	Capacity	Color	Pack Case	Case Weight	Case Cube
CMC	1358BE	13½ qt. - Rectangular	● Beige	12	15.00 lbs.	1.680
CMC	1358BK	13½ qt. - Rectangular	● Black	12	15.00 lbs.	1.680
CMC	1358BN	13½ qt. - Rectangular	● Brown	12	15.00 lbs.	1.680
CMC	1358GY	13½ qt. - Rectangular	● Grey	12	15.00 lbs.	1.680
CMC	1358GN	13½ qt. - Rectangular	● Green	12	15.00 lbs.	1.680
CMC	2818BE	28½ qt. - Rectangular	● Beige	12	27.00 lbs.	2.880
CMC	2818BK	28½ qt. - Rectangular	● Black	12	27.00 lbs.	2.880
CMC	2818BN	28½ qt. - Rectangular	● Brown	12	27.00 lbs.	2.880
CMC	2818GY	28½ qt. - Rectangular	● Grey	12	27.00 lbs.	2.880
CMC	2818GN	28½ qt. - Rectangular	● Green	12	27.00 lbs.	2.880
CMC	4114BE	41¼ qt. - Rectangular	● Beige	12	35.16 lbs.	3.480
CMC	4114BK	41¼ qt. - Rectangular	● Black	12	35.16 lbs.	3.480
CMC	4114BN	41¼ qt. - Rectangular	● Brown	12	35.16 lbs.	3.480
CMC	4114GY	41¼ qt. - Rectangular	● Grey	12	35.16 lbs.	3.480
CMC	4114GN	41¼ qt. - Rectangular	● Green	12	35.16 lbs.	3.480
CMC	4438BE	43¾ qt. - Round	● Beige	6	15.00 lbs.	3.900
CMC	4438GY	43¾ qt. - Round	● Grey	6	15.00 lbs.	3.900



Tilt-N-Wheel™

TILT-N-WHEEL™

These 50 gallon containers have a hinged double walled lid with standard 8" non-marking wheels.



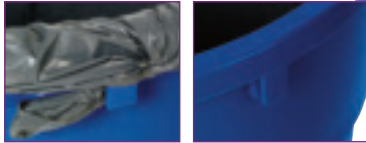
Available in a Recycle model, see page 105 for details.

Brand	Item Number	Capacity	Color	Pack Case	Case Weight	Case Cube
CMC	5850BK	50 gal.	● Black	2	56.00 lbs.	18.540
CMC	5850YW	50 gal.	● Yellow	2	56.00 lbs.	18.540





Recycling



Built-in Huskee™ Bag Cinch eliminates the need to tie knots in the polyliner to keep it secure around the receptacle rim!

HUSKEE™ ROUND
Molded of engineered resins with seamless construction, the Huskee™ is a strong, long lasting receptacle ideal for recycling applications. Optional Recycle Lid has center hole and permanent "Cans Only" imprint to encourage use.

Brand	Item Number	Capacity	Color	Pack Case	Case Weight	Case Cube
CMC	2000-1	20 gal.	● Blue	6	38.76 lbs.	10.920
CMC	3200-1	32 gal.	● Blue	6	57.60 lbs.	16.690

HUSKEE™ LID						
CMC	3201-1	fits 3200-1	○ White	6	13.80 lbs.	3.420



5556-1 Dome Lid accepts bottles or cans - fits 5555-1



HUSKEE™ SQUARE
Molded of engineered resins with seamless construction, the Huskee™ is a strong, long lasting receptacle ideal for recycling applications. Available in two size options; 48 gallon with handles and 55 gallon without handles. 55 gallon receptacle accepts the 5556-1 lid.

Brand	Item Number	Capacity	Color	Pack Case	Case Weight	Case Cube
CMC	4000-1	48 gal.	● Blue	4	59.12 lbs.	20.040
CMC	5555-1	55 gal.	● Blue	4	73.56 lbs.	25.640

DOME LID WITH HOLES						
CMC	5556-1	fits 5555-1	● Blue	1	13.30 lbs.	5.900



Trilingual (Eng/Sp/Fr) "Recycle Material ID Labels" are also included to make sorting easy!



Corner'Round™ Recycle Receptacles come with a unique 'Key-Way' feature and shoulder design that allows a poly liner to be secured and helps to hide the unsightly bag "skirt" to maintain a clean, professional appearance.

CORNER'ROUND™ RECYCLING STATION

Combine the new Recycle'Round™ Dolly and color-coded Corner'Round™ Receptacles to create a unique recycling collection system that promotes a comprehensive recycling program. Products are sold separately, allowing the creation of customized recycling programs for any application! Recycle'Round Station is ideal for open settings like school cafeterias, atriums, foyers, food courts, airport terminals, plazas, convention centers, etc.

Brand	Item Number	Capacity	Color	Pack Case	Case Weight	Case Cube
CMC	8325-1	21 gal.	● Blue	1	14.00 lbs.	4.810
CMC	8325-2	21 gal.	● Green	1	14.00 lbs.	4.810
CMC	8325-3	21 gal.	● Yellow	1	14.00 lbs.	4.810
CMC	8325-4	21 gal.	● Grey	1	14.00 lbs.	4.810

RECYCLE'ROUND™ DOLLY

This black, powder-coated steel Dolly has four 3", non-marking, all swivel casters. It turns Corner'Round Receptacles into a mobile waste collection system. Sturdy handle makes moving the unit from place to place a breeze.

Brand	Item Number	Capacity	Color	Pack Case	Case Weight	Case Cube
CMC	8325-D		● Black	1	21.30 lbs.	5.160



COLOSSUS® RECYCLING STATION

These high capacity recycle stations utilize color-coded, hinged recycle lids to promote and encourage users to sort their recyclables! Trilingual Material ID Labels (included) make sorting recyclables easy and allows the user to customize a program to their facility. Two rigid plastic liners allow for convenient and efficient separation of recyclables for multi-stream collection. Rigid liners are easily removed for emptying and cleaning. Four color-coded lids are included.

Brand	Item Number	Capacity	Color	Pack Case	Case Weight	Case Cube
CMC	645-1	45 gal.	● Blue	1	36.25 lbs.	14.319
CMC	656-1	56 gal.	● Blue	1	42.00 lbs.	16.529

WALL HUGGER™

Built of durable plastic, these newly designed receptacles work efficiently in tight spaces. Their sleek, attractive design holds either 16 or 23 gallons of recyclables, but protrude less than one foot from the wall. Molded-in bag cinch eliminates the need to tie knots in poly liners. The base features molded-in hand grips which provide a secure area to grasp when lifting or dumping. Designed with smooth, seamless construction for easy cleaning and prolonged life. The 23 gallon size is 30" tall, making it ideal for placement under standard work tables.

Brand	Item Number	Item	Color	Pack Case	Case Weight	Case Cube
CMC	8322BK	23 gal.	● Black	4	27.10 lbs.	6.200
CMC	8322-2	23 gal.	● Green	4	27.10 lbs.	6.200
CMC	8322-1	23 gal.	● Blue	4	27.10 lbs.	6.200
CMC	8316BK	16 gal.	● Black	4	22.50 lbs.	5.050
CMC	H8322BK	23 gal. w/handles	● Black	4	27.10 lbs.	7.150
CMC	H8322-2	23 gal. w/handles	● Green	4	27.10 lbs.	7.150
CMC	H8322-1	23 gal. w/handles	● Blue	4	27.10 lbs.	7.150
CMC	H8316BK	16 gal. w/handles	● Black	4	22.50 lbs.	5.050

WALL HUGGER™ MOUNTING BRACKET

Brand	Item Number	Fits	Pack Case	Case Weight	Case Cube
CMC	8319	#8321, 8322, H8322, 8316 & H8316	4	3.64 lbs.	0.040

RECYCLE LIDS

New style Wall Hugger™ Recycle Lids encourage users to sort their recyclables and are color-coded to make the identification easier. Fits all CCP Wall Hugger™ receptacles and competitive units.

Brand	Item Number	Item	Color	Pack Case	Case Weight	Case Cube
CMC	7315GY	Lid w/handles	● Grey	4	4.00 lbs	1.000
CMC	7315GN	Lid w/handles	● Green	4	4.00 lbs	1.000
CMC	7316GN	Lid w/holes	● Green	4	4.00 lbs	1.000
CMC	7316YW	Lid w/holes	● Yellow	4	4.00 lbs	1.000
CMC	7316BL	Lid w/holes	● Blue	4	4.00 lbs	1.000
CMC	7317BL	Lid w/slot	● Blue	4	4.00 lbs	1.000

DOLLIES

The Wall Hugger™ line offers both Single and Quad-Collection Dollies. These attractive, black powder-coated steel Dollies have 3", non-marking, all swivel casters, enabling them to turn any CMC Wall Hugger™ or competitive receptacle into a mobile waste or recycle collection system.

Brand	Item Number	Color	Pack Case	Case Weight	Case Cube
CMC	8320	● Black	2	17.00 lbs.	1.650
CMC	8320-4	● Black	1	18.00 lbs.	3.525



645-1 bases shown with all lid options.



7317BL



7316YW



7316GN

Wall Hugger™ Recycle Lids come with trilingual (Eng/Sp/Fr) "Recycle Material ID Labels" to make sorting easy!



7315GY



8320-4

8320



HALF ROUND WALL HUGGER™

The Half Round completes the popular Wall Hugger™ Line. Its smaller footprint and impressive 21 gallon capacity is ideal for today's space-efficient workplace. The rounded front and sides allow use where other square or rectangular containers would interfere with traffic. The Half Rounds may be suspended off of the floor with our 8319 Mounting Bracket, found on page 103.

Brand	Item Number	Capacity	Color	Pack Case	Case Weight	Case Cube
CMC	8321-1	21 gal.	● Blue	2	15.20 lbs.	8.780



SWINGLINE™

The Continental® Square SwingLine™ containers provide 25% more capacity than round containers of the same height, which equates to labor and poly liner savings. The rolled rim provides strength as well as a convenient area to lift or pull. Reinforced base will take rough commercial use and they nest for easy storage. Two 50-1 receptacles fit on a 8320-4 Quad-Collection Dolly (seen on page 103).

Brand	Item Number	Capacity	Color	Pack Case	Case Weight	Case Cube
CMC	25-1	25 gal.	● Blue	4	33.80 lbs.	8.440
CMC	32-1	32 gal.	● Blue	4	35.00 lbs.	9.280
CMC	50-1	50 gal.	● Blue	4	64.00 lbs.	13.770

SWINGLINE™ TIP TOP LID

This lid uses gravity to create a hands-free opening. Automatically closes to conceal trash. Fits 25 and 32 gallon Swingline™ receptacles.

Brand	Item Number	Fits	Color	Pack Case	Case Weight	Case Cube
CMC	T1700WH	fits 25 or 32 gal.	○ White	4	11.80 lbs.	2.240

SWINGLINE™ RECYCLE LIDS

These lids are specifically designed to accommodate either paper or bottle/can refuse. Both styles are available to fit any size Swingline™ Receptacle.

Brand	Item Number	Description/Fits	Color	Pack Case	Case Weight	Case Cube
CMC	1725-1	Lid w/slot fits 25 & 32 gal.	● Blue	4	7.50 lbs.	2.915
CMC	1750-1	Lid w/slot fits 50 gal.	● Blue	2	7.70 lbs.	2.679
CMC	1725-2	Lid w/whole fits 25 & 32 gal.	● Blue	4	7.50 lbs.	2.915
CMC	1750-2	Lid w/whole fits 50 gal.	● Blue	2	7.70 lbs.	2.679

COMMERCIAL WASTEBASKET

The low profile design of these rectangular wastebaskets make them ideal for a variety of recycle applications ranging from classroom, office, commercial or institutional use.

Brand	Item Number	Capacity	Color	Pack Case	Case Weight	Case Cube
CMC	1358-1	13 ⁵ / ₈ qt.	● Blue	12	15.00 lbs.	1.680
CMC	1358-2	13 ⁵ / ₈ qt.	● Green	12	15.00 lbs.	1.680
CMC	2818-1	28 ¹ / ₈ qt.	● Blue	12	27.00 lbs.	3.240
CMC	2818-2	28 ¹ / ₈ qt.	● Green	12	27.00 lbs.	3.240
CMC	4114-1	41 ¹ / ₈ qt.	● Blue	12	35.16 lbs.	3.480
CMC	4114-2	41 ¹ / ₈ qt.	● Green	12	35.16 lbs.	3.480



1358-2

CURBSIDE BIN

Used by environmentally conscious cities all across America for curbside recycle collection. This bin is durable and lightweight. Drain holes in base of bin prevent accumulation of rainwater. Notched sides allow units to be cross-stacked. For convenient indoor recycle collection, one or two Curbside Bins can be used with the MFT-5BK Trolley (details on page 6).

Brand	Item Number	Capacity	Color	Pack Case	Case Weight	Case Cube
CMC	5914-1	14 gal.	● Blue	12	47.40 lbs.	6.600



TILT-N-WHEEL™

These 50 gallon containers have a hinged double walled lid with standard 8", non-marking wheels.

Brand	Item Number	Capacity	Color	Pack Case	Case Weight	Case Cube
CMC	5850-1	50 gal.	● Blue	2	56.00 lbs.	18.540



CUBE TRUCK

This 16 cubic foot Cube Truck features 3" casters placed in a diamond configuration. Two stationary and two fixed casters allow this unit to be turned on its own axis for greater mobility. Ideal for bulk recycle collection.

Brand	Item Number	Capacity	Color	Pack Case	Case Weight	Case Cube
CMC	5916-1	16 cu. ft.	● Blue	1	50.00 lbs.	25.460



TILT TRUCK

Features one-piece, extra strong seamless industrial plastic construction. Inset wheel placement prevents wall/door damage and allows for nesting in shipment and in storage. Fits through standard office doorways.

Brand	Item Number	Capacity	Color	Pack Case	Case Weight	Case Cube
CMC	5840-1	5/8 cu. yd.	● Blue	1	79.00 lbs.	43.110

