

FOOD SERVICE SUPPLIES

- | | |
|-------------------------------|-----------------------------|
| 129-131 Shortening Filtration | 138 Thickline Hand Pads |
| 132 Filter Brite® Filter Pads | 138-139 Sponge N' Scrubbers |
| 133 Filter Powders | 140 Soap Pads |
| 134 Fryer Clean-Up | 140-141 Scrubbers |
| 135 Fruit & Vegetable Crisper | 142-143 Hats, Caps & Nets |
| 135-136 Scouring Pads | 144 Wood Expendables |
| 136 Color Code-It Pads | 144 Toothpicks |
| 137 Industrial Hand Pads | 145 Paper Expendables |
| 137 Scratch Resistant Pad | 145-146 Plastic Expendables |



How To Size Up a Conventional Filter

Measure Width, Length or Diameter of the filter to the most outside points. Note any hole in the filter, the location of the hole and size or diameter of the hole. Then locate the filter from pages 130 or 131 of this catalog. If the filter you're looking for is not listed, or you have questions concerning filter size, material or availability, call 1-800-325-1051. (For Filter Pads, powder-filled paper material, use our guide on page 132.)

For assistance in matching up a filter, Call 1-800-325-1051 (cst) and ask us for help.

SHEET

SINGLE THICKNESS

- 1 Measure width and length.
- 2 If a hole is present:
 - A. Measure across the opening of the hole to determine the diameter.
 - B. Measure all sides to the outside edge of the hole to determine its position.

DISC

ROUND WITH OR WITHOUT HOLE

- 1 Measure diameter of disc.
- 2 If a hole is present:
 - A. Measure across the opening of the hole to determine the diameter.
 - B. Measure all sides to the outside edge of the hole to determine its position.

ENVELOPE

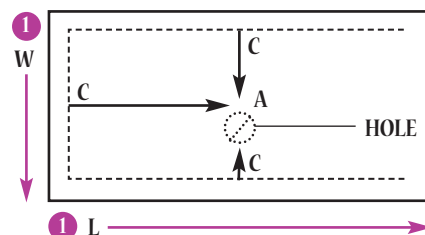
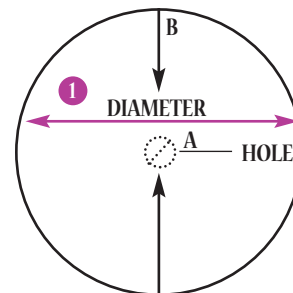
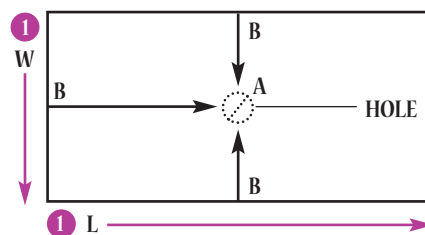
DOUBLE THICKNESS WITH STITCHING ON TWO OR THREE SIDES. THESE FILTERS WILL COME WITH OR WITHOUT HOLES. IF A HOLE IS PRESENT IT WILL EITHER BE THROUGH ONE SHEET OR GO DIRECTLY THROUGH THE FILTER.

- 1 Measure width and length.
- 2 If a hole is present:
 - A. Measure across the opening of the hole to determine the diameter.
 - B. Make a note if the hole is through one side of the filter or passes straight through both sides of the filter.
 - C. Measure from the closed or stitched points of the filter to the edge of the hole. You should have three measurements for the hole position when you've finished.

FILTER ITEM NO. LEGEND

Filter Type	Filter Material
E = Envelope	3 = Standard flow synthetic non-woven material
D = Disc	4 = 44 pound crepe paper material
S = Sheet	5 = 54 pound crepe paper material
T = Tabs	6 = paper filled with Filter Brite® Powder
	8 = 35 pound smooth paper material

D = DISCO
Filter Size
Filter Type
Filter Material
D 1414 E 4



Shortening Filtration

AUTOMATIC FILTER SHEETS



Filter sheets below fit the fryer brand listed. For proper fit and correct match of filter material, refer to guidelines and material legend on page 129.

Brand	Item Number	Filter Size & Detail	Fryer Brand	Pack Case	Case Weight	Case Cube	Brand	Item Number	Filter Size & Detail	Fryer Brand	Pack Case	Case Weight	Case Cube
Disco	D2112S5	12 ¹ / ₁₆ " x 21"	Anets	100	8.20 lbs.	0.610	Disco	D2416S4	16 ¹ / ₄ " x 24 ¹ / ₄ "	Giles / Chester Fried	100	9.80 lbs.	0.760
Disco	D1725S5	17" x 25"	Anets	100	12.50 lbs.	0.880	Disco	D1724S4	17 ¹ / ₈ " x 24 ¹ / ₈ "	Giles / Chester Fried	100	10.50 lbs.	0.880
Disco	D1423S4	14 ¹ / ₄ " x 23 ¹ / ₈ "	Broaster	100	8.50 lbs.	0.780	Disco	D3215S4	15 ³ / ₈ " x 32 ³ / ₈ "	Giles / Chester Fried	100	12.50 lbs.	1.250
Disco	D1321S4	13" x 20 ³ / ₄ "	Broaster	100	7.00 lbs.	0.610	Disco	D1932S4	19 ³ / ₈ " x 32 ³ / ₈ "	Giles / Chester Fried	100	15.50 lbs.	1.250
Disco	D725S4	7 ¹ / ₂ " x 25"	Dean	100	4.80 lbs.	0.740	Disco	D2312S5	12 ³ / ₈ " x 23 ⁵ / ₈ "	Imperial	100	9.00 lbs.	0.610
Disco	D1122S4	11" x 22 ⁵ / ₈ "	Dean	100	6.50 lbs.	0.610	Disco	D1115S3	11 ¹ / ₄ " x 15 ¹ / ₂ "	Keating	100	2.40 lbs.	0.610
Disco	D1222S4	12 ⁵ / ₈ " x 22 ⁵ / ₈ "	Dean	100	7.25 lbs.	0.580	Disco	D1521S4	15" x 21 ¹ / ₂ "	Keating	100	8.25 lbs.	0.780
Disco	D1618S4	16 ³ / ₈ " x 18 ³ / ₈ "	Dean	100	7.75 lbs.	0.590	Disco	D2022S4	20 ¹ / ₂ " x 22 ⁷ / ₈ "	Keating	100	11.50 lbs.	1.130
Disco	D1624S4	16 ³ / ₈ " x 24 ³ / ₈ "	Dean	100	9.75 lbs.	0.780	Disco	D2430S4	24" x 30"	Keating	100	17.00 lbs.	1.590
Disco	D1328S4	13 ¹ / ₄ " x 28 ³ / ₄ "	Dean	100	9.50 lbs.	1.040	Disco	D2532S3	25" x 32"	Keating	100	8.50 lbs.	1.150
Disco	D1328S3	13 ¹ / ₄ " x 28 ³ / ₄ "	Dean	100	5.00 lbs.	1.080	Disco	D1021S4	10" x 21"	Mercury	100	5.75 lbs.	0.580
Disco	D1120S3	11 ¹ / ₄ " x 20 ¹ / ₄ "	Frymaster	100	3.00 lbs.	0.610	Disco	D1324S5	13 ¹ / ₂ " x 24"	Pitco / Frialator	100	9.75 lbs.	0.780
Disco	D1217S3	12 ¹ / ₂ " x 17 ³ / ₄ "	Frymaster	100	2.50 lbs.	0.300	Disco	D1728S5	17 ¹ / ₂ " x 28"	Pitco / Frialator	100	14.25 lbs.	1.000
Disco	D1625S3	16 ¹ / ₂ " x 25 ¹ / ₂ "	Frymaster	100	5.00 lbs.	0.560	Disco	D1430S4	13 ⁷ / ₈ " x 30 ⁹ / ₁₆ ", 1 ¹ / ₈ " hole	Prince Castle	100	10.33 lbs.	1.570
Disco	D1927S3	19 ¹ / ₂ " x 27 ¹ / ₂ "	Frymaster	100	5.00 lbs.	0.680	Disco	D1420S8	14 ¹ / ₂ " x 20 ¹ / ₂ "	RTI	100	6.25 lbs.	0.780
Disco	D2025S3	20 ¹ / ₄ " x 25 ¹ / ₄ "	Frymaster	100	6.00 lbs.	1.000	Disco	D1825S8	18" x 25"	RTI	100	9.50 lbs.	0.880
Disco	D2133S3	21" x 33 ¹ / ₄ "	Frymaster	100	6.50 lbs.	0.990	Disco	D1221S3	12" x 21 ¹ / ₂ ", 3/4" hole	Vulcan-Hart	100	3.00 lbs.	0.610
Disco	D2634S3	26" x 34"	Frymaster	100	9.00 lbs.	1.150	Disco	D1823S3	18 ¹ / ₂ " x 23 ¹ / ₂ ", 3/4" hole	Vulcan-Hart	100	4.50 lbs.	1.040
Disco	D259S4	9 ¹ / ₈ " x 25 ¹ / ₄ "	Giles / Chester Fried	100	6.00 lbs.	0.490	Disco	D1520S3	15" x 20"	Wells	100	3.50 lbs.	0.540
Disco	D1116S4	11 ¹ / ₂ " x 16 ⁹ / ₁₆ "	Giles / Chester Fried	100	5.25 lbs.	0.590	Disco	D1532S3	15" x 32"	Wells	100	5.00 lbs.	1.450



AUTOMATIC FILTER DISCS

Filter discs below fit the fryer brand listed. For proper fit and correct match of filter material, refer to guidelines and material legend on page 129.



Assorted conventional filters.

Brand	Item Number	Filter Size & Detail	Fryer Brand	Pack Case	Case Weight	Case Cube
Disco	D1775D5	17 ³ / ₄ ", no hole	Anets	100	7.00 lbs	0.660
Disco	D2150D5	21 ¹ / ₂ ", no hole	Anets	100	11.00 lbs	0.880
Disco	D1525D3	15 ¹ / ₄ ", 1" hole	Blickman Pre-filter only	100	2.50 lbs	0.560
Disco	D1375T4	13 ³ / ₄ ", 4 tabs	Broaster	100	5.00 lbs	0.390
Disco	D1400T4	14", 4 tabs	Keating	100	5.00 lbs	0.390
Disco	D1400T3	14", 4 tabs	Keating	100	3.00 lbs	0.390
Disco	D1200D4	12", 3" slot	Mies	100	3.50 lbs	0.390
Disco	D1375D4	13 ³ / ₄ ", 1 ⁵ / ₈ " hole	Mies	100	4.25 lbs	0.390
Disco	D1825D4	18 ³ / ₈ ", 1 ⁵ / ₈ " hole	Mies	100	6.75 lbs	0.640
Disco	D2350D4	23 ¹ / ₂ ", 1 ⁵ / ₈ " hole	Mies	100	11.00 lbs	1.130
Disco	D2178D4	21 ⁷ / ₈ ", 1 ⁵ / ₈ " hole	Prince Castle	100	9.25 lbs	0.950
Disco	D1450D5	14 ¹ / ₂ ", no hole	Renu / Anets	100	5.00 lbs	0.390
Disco	D1575D4	15 ³ / ₄ ", no hole	Renu	100	5.25 lbs	0.560
Disco	D2150D4	21 ¹ / ₂ ", no hole	Renu	100	9.25 lbs	0.950

AUTOMATIC FILTER ENVELOPES

Filter envelopes below fit the fryer brand listed. For proper fit and correct match of filter material, refer to guidelines and material legend on page 129.



Brand	Item Number	Filter Size & Detail	Fryer Brand	Pack Case	Case Weight	Case Cube
Disco	D1223E3	12 1/4" x 23", 7/8" hole, 1 side	Anets	100	6.00 lbs.	0.930
Disco	D1322E3	13" x 22", 7/8" hole, 1 side	Anets	100	5.60 lbs.	0.930
Disco	D1214E4	12" x 14 1/4", 1 1/2" hole, centered	Ballantyne / Hobart	100	8.50 lbs.	0.870
Disco	D1412E4	12 1/4" x 14 1/4", 1 1/2" hole, offset	Ballantyne / Hobart	100	8.50 lbs.	0.870
Disco	D1113E4	11" x 13", 7/8" hole, 2 sides	Belshaw / Pitco	100	7.25 lbs.	0.870
Disco	D918E31	9 1/4" x 18 1/4", 1 1/2" hole, 1 side	BKI / Bar-B-Q-King	100	2.50 lbs.	0.430
Disco	D1320E3	13 1/2" x 20 1/2", 1 1/4" hole, 1 side	BKI	100	5.50 lbs.	0.800
Disco	D1423E4	14 1/4" x 22 1/2", 1 1/8" hole, 1 side	Collectromatic / Winston	100	15.25 lbs.	1.040
Disco	D1722E4	16 3/4" x 22 1/2", 1 1/8" hole, 1 side	Collectromatic / Winston	100	18.00 lbs.	1.770
Disco	D1313E4	13" x 13 1/8", no hole	F.A.S.T.	100	8.50 lbs.	0.870
Disco	D1313E3	13" x 13 1/8", no hole	F.A.S.T.	100	3.75 lbs.	0.340
Disco	D1719E3	17 1/2" x 19 1/4", no hole	Frymaster	100	6.50 lbs.	0.950
Disco	D1415E4	14" x 15", 7/8" hole, 2 sides	Falcon / KFC	100	10.50 lbs.	0.870
Disco	D1422E3	14" x 22", 1 1/2" hole, 1 side	Henny Penny	100	6.00 lbs.	0.810
Disco	D913E4	9 1/4" x 13", 1" hole, 1 side	Hunter	100	6.25 lbs.	0.870
Disco	D1418E4	14 1/4" x 18 1/4", 1 1/2" hole, 1 side	Hunter	100	12.50 lbs.	1.040
Disco	D1500E4	14" x 15 1/2", 1 1/2" hole, 1 side	Hunter	100	10.50 lbs.	0.890
Disco	D1718E4	17 1/2" x 18 1/2", 1 1/2" hole, 1 side	Hunter	100	19.50 lbs.	1.460
Disco	D1920E4	19 3/4" x 20 3/4", 1 7/8" hole, 2 sides	Immaculator / KFC	100	19.00 lbs.	2.260
Disco	D1420E5	14 3/8" x 20 1/2", 1 3/8" hole, 1 side	Pitco / Frialator	100	16.78 lbs.	1.200
Disco	D1820E5	18 1/2" x 20 1/2", 1 1/2" hole, 1 side	Pitco / Frialator	100	22.50 lbs.	1.760
Disco	D2010E5	10 1/2" x 20 1/2", 1 3/8" hole, 1 side	Pitco	100	12.80 lbs.	1.320
Disco	D2214E5	14" x 22", 1 1/2" hole, 1 side	Pitco	100	18.40 lbs.	1.320
Disco	D1111E4	11" x 11", 7/8" hole, 2 sides	Sparkler	100	6.50 lbs.	0.870
Disco	D1416E4	14" x 16", 7/8" hole, 2 sides	Sparkler	100	11.00 lbs.	0.870
Disco	D1717E4	17" x 17 1/2", 7/8" hole, 2 sides	Sparkler	100	14.00 lbs.	1.270
Disco	D2425E4	24" x 25", 1 3/4" hole, 2 sides	Sparkler / KFC	100	28.00 lbs.	2.260
Disco	D1014E4	10 3/4" x 14 1/2", no hole	Vulcan Hart / Hobart	100	9.00 lbs.	0.870
Disco	D1221E3	12" x 21 1/2", 3/4" hole, 2 sides	Vulcan Hart	100	5.00 lbs.	0.820

MANUAL FILTERS & HOLDERS

Manual filters are made from a high flow non-woven material for efficient filtering. Our material removes more particles from the shortening than a china cap or cheesecloth, therefore maintaining food quality.



Brand	Item Number	Filter Size / Detail	Pack Case	Case Weight	Case Cube
Disco	FC100	10" Filter Cone	100 Bulk	1.90 lbs.	0.210
Disco	FC-10-3	10" Filter Cone	10/50	11.00 lbs.	1.590
Disco	FCH-10-1	Filter Cone Holder	1 ea.	2.00 lbs.	1.090
Disco	DF1600FF	16" Fast Flute Filter	6/50	9.00 lbs.	2.770
Disco	FH16	Fast Flute Filter Holder	1 ea.	2.00 lbs.	1.090



Filter Brite® Filter Pads

CONTAINS OIL PURIFICATION POWDER INSIDE THE PAPER.



AUTOMATIC FILTER SHEETS

Filter sheets fit the fryer brand listed. For proper fit, refer to the guidelines at the bottom of the page.

Brand	Item Number	Filter Size & Detail	Fryer Brand	Pack Case	Case Weight	Case Cube
Disco	D1217S6	12 ¹ / ₂ " x 17 ³ / ₄ "	Frymaster	30	3.20 lbs.	0.270
Disco	D1123S6	11 ¹ / ₂ " x 23"	Frymaster	30	4.00 lbs.	0.520
Disco	D1221S6	12 ³ / ₈ " x 21"	Frymaster	30	3.75 lbs.	0.520
Disco	D1223S6	12" x 23 ¹ / ₂ "	Frymaster	30	4.00 lbs.	0.520
Disco	D1121S6	11 ¹ / ₂ " x 21 ¹ / ₂ "	Frymaster	30	3.50 lbs.	0.520
Disco	D1421S6	14" x 21"	Frymaster	30	4.00 lbs.	0.580
Disco	D1429S6	14" x 29"	Frymaster	30	6.00 lbs.	1.570
Disco	D1222S6	12 ⁵ / ₈ " x 22 ⁵ / ₈ "	Dean	30	4.00 lbs.	0.510
Disco	D1324S6	13 ¹ / ₂ " x 24"	Pitco	30	4.50 lbs.	0.580
Disco	D1624S6	16 ³ / ₈ " x 24 ³ / ₈ "	Chester Fried / Dean	30	5.20 lbs.	0.660



Disco® Filter Brite® filter pads require no retrofit of the filter unit.



AUTOMATIC FILTER DISCS

Filter discs fit the fryer brand listed. For proper fit, refer to the guidelines at the bottom of the page.

Brand	Item Number	Filter Size & Detail	Fryer Brand	Pack Case	Case Weight	Case Cube
Disco	D1375D6	13 ³ / ₄ " dia., 1 ⁵ / ₈ " hole	Miles	30	2.50 lbs.	0.640
Disco	D1825D6	18 ³ / ₈ " dia., 1 ⁵ / ₈ " hole	Miles	30	4.00 lbs.	0.610
Disco	D2150D6	21 ¹ / ₂ " dia., no hole	Renu / Anets	30	4.80 lbs.	0.720
Disco	D2178D6	21 ⁷ / ₈ " dia., 1 ⁵ / ₈ " hole	Prince Castle	30	7.00 lbs.	0.510



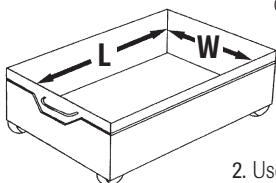
AUTOMATIC FILTER ENVELOPES

Filter envelopes fit the fryer brand listed. For proper fit, refer to the guidelines at the bottom of the page.

Brand	Item Number	Filter Size & Detail	Fryer Brand	Pack Case	Case Weight	Case Cube
Disco	D918E6	9 ¹ / ₄ " x 18 ¹ / ₄ ", 1 ¹ / ₂ " hole	Bar-B-Q King / BKI	30	4.50 lbs.	0.410
Disco	D1014E6	10 ³ / ₄ " x 14 ¹ / ₂ ", no hole	Vulcan Hart / Hobart	30	4.50 lbs.	0.400
Disco	D1313E6	10" x 13 ¹ / ₈ ", no hole	F.A.S.T.	30	5.00 lbs.	0.400
Disco	D1416E6	14" x 16", 7 ⁷ / ₈ " hole, 1 side	Sparkler / KFC	100	11.00 lbs.	0.870
Disco	D1422E6	14" x 22", 1 ¹ / ₂ " hole, 1 side	Henny Penny / BKI	30	7.75 lbs.	0.610
Disco	D1820E6	18 ¹ / ₂ " x 20 ¹ / ₂ ", 1 ¹ / ₂ " hole, 1 side	Pitco	30	9.30 lbs.	1.150
Disco	D1718E6	17 ¹ / ₂ " x 18 ¹ / ₂ ", 1 ¹ / ₂ " hole, 1 side	RF Hunter	30	8.00 lbs.	0.640

How To Size a Filter Pad

Note: When using a Filter Brite® filter pad in a Frymaster filter unit, the pad must fit the inside dimension of the filter pan. It cannot be over or undersized or poor filtration will occur. Filter Brite pads must fit to within 1/8" of the sides of the pan. It is critical that you measure the length and width of the inside of the filter pan. **DO NOT GUESS.** See the illustration below for further detail.



1. Measure the inner length and width of the filter pan.
L = Length W = Width
Example: L = 21¹/₂" x W = 11⁵/₈"

2. Use the dimensions to locate the correct filter pad from the listing below. If the filter pad you're looking for is not listed, or you have questions concerning filter size, material or availability, call 1-800-548-5150. Disco has a team of Hot Oil Specialists ready to answer your filtering questions.

Filter Powders

DEFLATE OIL COST AND IMPROVE FOOD QUALITY

FILTER BRITE® OIL PURIFICATION POWDER

Filter Brite® Oil Purifier filters harmful contaminants out of cooking oil to maintain food quality and extend the useful life of the cooking oil. It is permitted for use in oils by the FDA and USDA. Available in bulk or convenient portion packs.

FOOD QUALITY

- Removes particles from oil and reduces carbon build-up in fryer pot.
- Increased hold time.
- Fried food appearance is better and more consistent.
- Better tasting food.
- Fried food absorbs less oil.
- Reduces smoking and free fatty acids.

INCREASE PROFITS

- Less labor costs.
- Easy and safe to use.
- Pre-measured Filter Brite® Oil Purifier in the filter pad or portion pack reduces equipment oil pump failure.
- Reduces oil cost by up to 50%.

FILTER BRITE® PORTION PACKS

Filter Brite® Portion Packs contain our oil purifier. The FB560 will filter a 35 to 50 lb. capacity fry pot.

Brand	Item Number	Pack Case	Case Weight	Case Cube
Disco	FB560	1/60	14.00 lbs.	0.940

FILTER BRITE® BULK

Filter Brite® Oil Purifier is available in a bulk box containing 13 lbs. of powder. Inside the box is an eight ounce (by volume) scoop for measuring the right amount of powder every time. Use one scoop when filtering a 35 to 50 lb. capacity fry pot.

Brand	Item Number	Pack Case	Case Weight	Case Cube
Disco	BR20	60 Applications	14.00 lbs.	0.570

DIATOMACEOUS EARTH BULK (DE)

Diatomaceous Earth (also known as DE) aids in the filtration of oil by removing the solid contaminants from the oil (crumbs) during the filtering process. Available in our 25 lb. box. Not an oil purifier.

Brand	Item Number	Pack Case	Case Weight	Case Cube
Disco	DE125	166 Applications	27.00 lbs.	2.190

SHORTENING FILTER POWDER

This depth filtration aid helps in the filtration of oil by removing the solid contaminants from the oil (crumbs) during the filtering process. When used in conjunction with filter paper, it creates a cake on top of the filter, adding an extra layer of depth filtration.

Brand	Item Number	Pack Case	Case Weight	Case Cube
Disco	DFP-80	80 Applications	1.25 lbs.	6.100

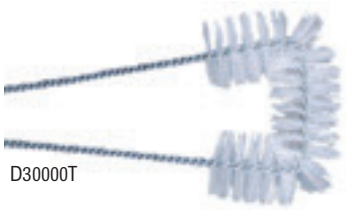
PRODUCTS THAT EXTEND THE LIFE OF OIL



Fryer Clean-Up Accessories

HIGH TEMPERATURE FRYER BRUSHES

Cleaning is a constant part of fryer operation. Using the right tools to clean the fryer is just as important as filtration. Our fryer brushes are designed to clean all areas of the fryer while it's still in operation. The bristles are heat resistant to 500°F so that the fryer can be cleaned during filtering without having to wait for it to cool down.



D30000T



D31000T



D32000T



D33000TPO



D34000TPO

Brand	Item Number	Item	Overall Length	Fiber	Bristle Length	Pack Case	Case Weight	Case Cube
Disco	D30000T	U-Shaped Fryer Brush	24"	Teflon	2"	6	3.48 lbs.	0.400
Disco	D31000T	Straight Fryer Brush	28"	Teflon	1"	12	6.00 lbs.	0.400
Disco	D32000T	L-Tipped Fryer Brush	23"	Teflon	7/8"	12	4.56 lbs.	0.400

Additional heat resistant brushes can be found on page 72.

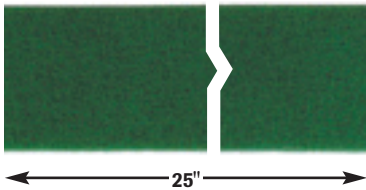
ECONOMY FRYER BRUSHES

Our economy fryer brushes feature natural tampico bristles set into a wire twist with a wooden handle. Good performance at a low cost.

Brand	Item Number	Item	Overall Length	Fiber	Bristle Length	Pack Case	Case Weight	Case Cube
Disco	D33000TPO	Straight Fryer Brush	26"	Tampico	2 1/2"	12	5.50 lbs.	0.620
Disco	D34000TPO	L-Tipped Fryer Brush	23"	Tampico	2"	12	6.00 lbs.	0.560

STROPPING PAD

For cleaning around and underneath fryer heating elements where it is difficult to reach with a brush. Medium-duty pad.



Brand	Item Number	Size	Pack Case	Case Weight	Case Cube
Disco	SP-94	4" x 25"	1/24	3.00 lbs.	0.560
Glit	20966	4" x 25"	2/10	3.40 lbs.	0.559

FRYER DRAIN ROD

The Fryer Drain Rod is a key tool to have handy when filtering a fryer. Used to push through crumbs and other debris when they clog the fryer drain pipe.



Brand	Item Number	Size	Material	Pack Case	Case Weight	Case Cube
Disco	FDR	5/8" dia.	Nickel Plated Steel	1	1.50 lbs.	0.510

FRYER BOIL OUT

Boil Out removes the carbon build-up in fry pots and is economical and easy to use. Clean heating elements maintain constant temperature during frying which results in quality foods and reduces fryer down time. Each eight lb. container has enough to do approximately ten boil outs for a 50 lb. capacity fryer. There are two eight lb. containers per case. Available in two formulations; standard and non-corrosive.



Brand	Item Number	Description	Pack Case	Case Weight	Case Cube
Disco	FB08	Fryer Boil Out	2/8 lb.	16.00 lbs.	0.410
Disco	MSFB08	Metal Safe Fryer Boil Out	2/8 lb.	16.00 lbs.	0.410

Fruit & Vegetable Crisper

FRESHWAY®

Use FreshWay® with confidence to retain the crispness and color of fresh cut fruits and vegetables. FreshWay® contains no sulfites; it will retard oxidation rather than reverse it. FreshWay® will extend the life of fresh cut lettuce and cabbage by two to five days, depending on water and vegetable conditions. FreshWay® solution may also be used with bell peppers, cucumbers, tomatoes, celery, radishes, mushrooms, carrots, apples, potatoes and more. When comparing FreshWay® with other crispers on the market, remember that FreshWay® does not contain any fillers like dextrose or corn sugar, which means it will cost less to use. Made in USA.

Brand	Item Number	Pack Case	Case Weight	Case Cube
Disco	FW61	6/1 lb.	6.70 lbs.	0.220
Disco	FW12	12/1 lb.	12.95 lbs.	0.450
Disco	FW65	6/5 lbs.	32.50 lbs.	0.770



Scouring Pads

Ultra-Fresh™ is an antimicrobial treatment that has been applied to the products marked with the Ultra-Fresh™ logo. Ultra-Fresh™ protects the binding agent in the product to control odors and fungal growth within the binder. This product does not protect users or others against bacteria, virus, germs or other disease causing organisms. Always clean and wash the product thoroughly before and after each use.

HEAVY-DUTY SCOURING PAD - DARK GREEN

Very abrasive pad. Effective for removing heavy baked-on deposits, such as rust and corrosive deposits from metal surfaces. Ideal for hard-to-clean utensils and scuff marks on floors.

Brand	Item Number	Size	Pack Case	Case Weight	Case Cube
Disco	HD69	6" x 9"	6/10	5.70 lbs.	1.970
Disco	HD69/15	6" x 9"	1/15	1.50 lbs.	0.360
Disco	HD468/5	4" x 6"	8/5	1.95 lbs.	0.560
Glit	20954	6" x 9"	6/10	5.20 lbs.	1.279
Glit	20955	6" x 9"	60/bulk	5.20 lbs.	1.187
Glit	22584	6" x 9"	3/12	4.20 lbs.	0.815

* Ultra-Fresh™ is a registered trademark of Thompson Research Associates, Inc.

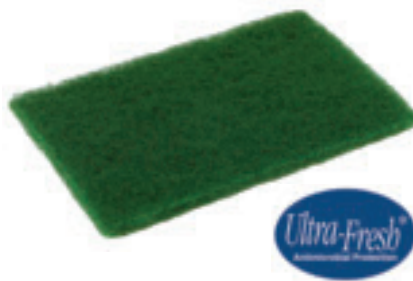


MEDIUM-DUTY SCOURING PAD - GREEN

Our best seller! A general purpose cleaning pad, designed for daily cleaning of pots, pans, utensils, equipment and floors. Great for cleaning fresh vegetables. Not recommended for use on certain soft plastics, fine china or polished stainless steel.

Brand	Item Number	Size	Pack Case	Case Weight	Case Cube
Disco	MD69	6" x 9"	6/10	3.75 lbs.	0.650
Disco	MD69/20	6" x 9"	1/20	1.32 lbs.	0.260
Disco	MD468/5	4" x 6"	8/5	1.45 lbs.	0.560
Glit	20940	6" x 9"	6/10	3.67 lbs.	0.863
Glit	20941	6" x 9"	60/bulk	3.80 lbs.	0.885
Glit	20942	6" x 9"	3/20	4.00 lbs.	0.846

* Ultra-Fresh™ is a registered trademark of Thompson Research Associates, Inc.



**Hand
Size**



MEDIUM-DUTY SCOURING PAD - GREEN

General purpose thick pad for cleaning pots and pans, cooking utensils, equipment, floors, walls and counters. Its small, hand-size eliminates the need to fold or cut the pad.

Brand	Item Number	Size	Pack Case	Case Weight	Case Cube
Disco	MD9650/60	3 1/2" x 5"	1/60	1.84 lbs.	0.560
Glit	20958	3 1/2" x 5"	40/bulk	1.40 lbs.	0.454
Glit	20959	3 1/2" x 5"	60/bulk	2.10 lbs.	0.841

* Ultra-Fresh™ is a registered trademark of Thompson Research Associates, Inc.

LIGHT-DUTY SCOURING PAD - WHITE

Light abrasive pad for cleaning fine surfaces such as porcelain, non-stick cookware, ceramic tile, plastics, stoves and terrazzo floors.

Brand	Item Number	Size	Pack Case	Case Weight	Case Cube
Disco	LD69	6" x 9"	6/10	2.66 lbs.	0.650
Glit	20948	6" x 9"	6/10	2.40 lbs.	0.841
Glit	20949	6" x 9"	60/bulk	2.40 lbs.	0.841
Glit	20950	6" x 9"	3/20	2.40 lbs.	0.841

* Ultra-Fresh™ is a registered trademark of Thompson Research Associates, Inc.

Color Code-It Hand Pads

The Color Code-It System is specially designed for food processing and preparation, grocery supermarket and healthcare applications, to reduce the likelihood of cross contamination. Hand pads, by color, are designated for specific areas. These color-coded pads will not rust or splinter and easily conform to cracks and crevices. Approved for usage in the meat and poultry industry. Washable for re-use.

COLOR CODE-IT PADS

RED HAND PAD: MEDIUM DUTY

For receiving/raw materials and raw meat areas.

GREEN HAND PAD: MEDIUM DUTY

For prep/wash size reduction areas, produce areas and rest rooms.

YELLOW HAND PAD: LIGHT DUTY

For process - non-food contact surface areas, general clean-up of non-food contact surface areas and patient areas.

TAN HAND PAD: LIGHT DUTY

For contaminated surface areas, poultry and general purpose areas.

BLUE HAND PAD: LIGHT DUTY

For packaging and seafood areas and emergency rooms.

WHITE HAND PAD: LIGHT DUTY

For process - food contact surface areas, cooked, processed and prepared food areas.

WALNUTPAD®: SCRATCH RESISTANT

For public areas, bakery areas and for common areas.



Brand	Item Number	Item	Size	Pack Case	Case Weight	Case Cube
Glit	29304	Red Medium Duty Hand Pad	6" x 9"	20/bulk	1.30	0.249
Glit	29302	Green Medium Duty Hand Pad	6" x 9"	20/bulk	1.20	0.249
Glit	29305	Yellow Light Duty Hand Pad	6" x 9"	20/bulk	1.00	0.249
Glit	29307	Tan Light Duty Hand Pad	6" x 9"	20/bulk	1.00	0.249
Glit	29306	Blue Light Duty Hand Pad	6" x 9"	20/bulk	1.00	0.249
Glit	29301	White Lite Duty Hand Pad	6" x 9"	20/bulk	0.93	0.249
Glit	29303	Walnut® Scratch Resistant	6" x 9"	20/bulk	1.10	0.249

Industrial Hand Pads

FOR USE WITH INDUSTRIAL SOLVENT CLEANERS.

A superior range of non-woven synthetic fiber pads coated with abrasive and bonded together with a special adhesive system to withstand harsh industrial solvents. For heavy industrial use in cleaning, finishing and preparing metals and wood surfaces.

INDUSTRIAL PADS

INDUSTRIAL GREY:

For fine cleaning and finishing requirements, denibbing between coats and rubbing down primers and sealers. Removes scratches on metal surfaces, smoothing base wood and rubbing in furniture oils.

INDUSTRIAL MAROON:

Great for cleaning machinery or surface preparation for coating and lamination. Used in printing operations to clean presses and rolls.

INDUSTRIAL TAN:

For demanding finishing or cleaning machinery and equipment. Fast removal of rust, oxidation and corrosion.

INDUSTRIAL GREEN:

For removing heavy deposits of rust or corrosion.

Brand	Item Number	Item	Size	Pack Case	Case Weight	Case Cube
Glit	26040	Industrial Grey	6" x 9"	3/20	4.80	0.841
Glit	26041	Industrial Maroon	6" x 9"	3/20	6.00	0.841
Glit	26042	Industrial Tan	6" x 9"	4/10	7.00	0.454
Glit	26044	Industrial Green	6" x 9"	3/20	4.00	0.841



Scratch Resistant Cleaning



CONTOUR® PAD - BLUE

Contains an organic compound that cleans without scratching. Safe to use on virtually any surface. Four "angle points" to easily clean corners on counter tops, food pans, and equipment. Contoured to match the natural shape of your palm. Blue color for easy identification versus heavy and medium-duty pads that scratch.

Brand	Item Number	Size	Pack Case	Case Weight	Case Cube
Disco	TP20	5 ³ / ₄ " x 3 ¹ / ₂ "	1/20	1.00 lbs.	0.250
Glit	29523	5 ³ / ₄ " x 3 ¹ / ₂ "	20/bulk	1.00 lbs.	0.249

* Ultra-Fresh™ is a registered trademark of Thompson Research Associates, Inc.



WALNUTPAD® - BROWN

Scratch resistant hand pad with aggressive cleaning action. This unique pad contains crushed walnut shells which makes it safe to clean stainless steel, copper, coated cookware and any surface where scratching is a concern. Available in two sizes.

Brand	Item Number	Size	Pack Case	Case Weight	Case Cube
Disco	WP69/20	6" x 9"	1/20	1.14 lbs.	0.260
Disco	WP46/20	4" x 6"	1/20	0.63 lbs.	0.140
Glit	29514	6" x 9"	20/bulk	1.00 lbs.	0.239

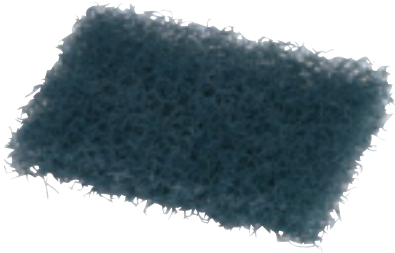
* Ultra-Fresh™ is a registered trademark of Thompson Research Associates, Inc.



Thickline Hand Pads

POT & PAN SCRUBBER - BLUE

Hand-size, very abrasive scouring pad made for the toughest jobs, as well as those hard-to-clean areas. Popular for use in processing plants and on pots and pans. Because of its higher abrasion, in many cleaning situations, it can take the place of stainless steel or a metal scrubber.



Brand	Item Number	Size	Pack Case	Case Weight	Case Cube
Disco	PP80	3 1/2" x 5"	3/12	2.00 lbs.	0.560
Disco	PP80/20	3 1/2" x 5"	1/20	1.25 lbs.	0.260
Disco	PP88	3 1/2" x 5"	4/10	2.02 lbs.	0.560
Glit	20960	3 1/2" x 5"	3/12	2.00 lbs.	0.444
Glit	20961	3 1/2" x 5"	4/10	1.80 lbs.	0.687

* Ultra-Fresh™ is a registered trademark of Thompson Research Associates, Inc.

LITE WIPE - WHITE

Specially designed for cleaning porcelain dinnerware, enamel, stainless steel, brass, plexiglass, leaded glass, sneeze guards and copper cookware. Will not cause scratches that may dull and discolor fine surfaces.



Brand	Item Number	Size	Pack Case	Case Weight	Case Cube
Disco	LW35	3 1/2" x 5"	1/40	1.25 lbs.	0.560
Glit	20957	3 1/2" x 5"	40/bulk	1.40 lbs.	0.529

* Ultra-Fresh™ is a registered trademark of Thompson Research Associates, Inc.



Sponge N' Scrubbers

CONTOUR® SPONGE N' SCRUBBER

Utility cellulose sponge with scrubber that contains an organic compound which cleans without scratching. Safe to use on virtually any surface. Four "angle points" to easily clean corners on counter tops, food pans, and equipment. Contoured to match the natural shape of your palm. Blue color for easy identification versus heavy and medium-duty pads that scratch.



Scratch Resistant

Brand	Item Number	Size	Pack Case	Case Weight	Case Cube
Disco	TSS20	5 3/4" x 3 1/2" x 3/4"	1/20	3.00 lbs.	0.300
Glit	20908	5 3/4" x 3 1/2" x 3/4"	20/bulk	1.20 lbs.	0.274

* Ultra-Fresh™ is a registered trademark of Thompson Research Associates, Inc.

WALNUTPAD® SPONGE N' SCRUBBER

Utility cellulose sponge with a scratch resistant WalnutPad®. Cellulose sponge absorbs water while the WalnutPad® helps cleaners work even better. Safe to use on stainless steel, copper, coated cookware and any surface where scratching is a concern.



Scratch Resistant

Brand	Item Number	Size	Pack Case	Case Weight	Case Cube
Disco	WSS20	3 7/16" x 6 1/4"	20	1.68 lbs.	0.260
Glit	29513	3 7/16" x 6 1/4"	20/bulk	1.20 lbs.	0.246

* Ultra-Fresh™ is a registered trademark of Thompson Research Associates, Inc.

MEDIUM-DUTY SPONGE N' SCRUBBER

Utility cellulose sponge with medium-duty scouring pad attached. Cellulose sponge absorbs water while the green abrasive pad helps cleaners work even better. Works well on sinks, countertops, tables, walls, pots and pans. Rinses clean easily.

Brand	Item Number	Size	Pack Case	Case Weight	Case Cube
Disco	SS650	3 1/8" x 6 1/4"	4/10	3.40 lbs.	0.560
Disco	SS652	3 1/8" x 6 1/4"	8/5	3.35 lbs.	0.560
Glit	20944	3 1/8" x 6 1/4"	40/bulk	3.60 lbs.	0.587
Glit	20945	3 1/8" x 6 1/4"	4/10	2.60 lbs.	0.625
Glit	23107	3 1/8" x 6 1/4"	20/bulk	1.36 lbs.	0.255
Glit	20946	3 1/8" x 6 1/4"	8/5	3.00 lbs.	0.625

* Ultra-Fresh™ is a registered trademark of Thompson Research Associates, Inc.



LIGHT-DUTY SPONGE N' SCRUBBER

Utility cellulose sponge with light-duty scouring pad attached. Excellent for cleaning countertops, appliances, ceramic tile, laminates, railings, sinks, tubs and showers.

Brand	Item Number	Size	Pack Case	Case Weight	Case Cube
Disco	CS85	3 1/8" x 6 1/4"	8/5	2.70 lbs.	0.560
Glit	20951	3 1/8" x 6 1/4"	40/bulk	2.95 lbs.	0.613
Glit	20952	3 1/8" x 6 1/4"	4/10	3.24 lbs.	0.656
Glit	23535	3 1/8" x 6 1/4"	20/bulk	1.60 lbs.	0.255
Glit	20953	3 1/8" x 6 1/4"	8/5	3.30 lbs.	0.602

* Ultra-Fresh™ is a registered trademark of Thompson Research Associates, Inc.



CELLULOSE SPONGES

Biodegradable cellulose sponges will hold over 20 times their weight in liquid making them ideal for both pick-up and transfer of fluid. Ideal for countertops and formica surfaces.

Brand	Item Number	Size	Pack Case	Case Weight	Case Cube
Disco	CS3561	3 3/8" x 6 1/4" x 1"	8/5	3.75 lbs.	0.560
Disco	CS462	4 1/8" x 6 1/4" x 1 5/8"	8/5	10.05 lbs.	1.670
Glit	26767	3 3/8" x 6 1/4" x 1"	48	4.20 lbs.	0.682
Glit	26768	4 1/8" x 6 1/4" x 1 5/8"	24	4.00 lbs.	0.655
Glit	26773	4 3/16" x 7 9/16" x 1 11/16"	12	2.00 lbs.	0.380



BIG BOSS II™

Poly-foam sponge surrounded by knitted mesh that exposes hundreds of tiny scouring surfaces. Rinses clean and floats in water. Safe to use on virtually any surface. Packaged in a printed carton that converts to a retail display case.

Brand	Item Number	Size	Pack Case	Case Weight	Case Cube
Disco	D29590	3 1/2" x 5 1/2"	24	0.90 lbs.	0.200



Soap Pads

STEEL WOOL SOAP PADS

Made of fine steel wool formed into a large "hotel size" soap impregnated pad. Dissolves stubborn grease and lifts-off sticky food particles leaving behind a bright new shine. Not recommended for soft plastics or fine china. Available in the Brillo® branded box or our generic poly bag that is reclosable.

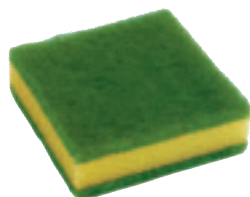


Brand	Item Number	Brand	Size	Inner Packaging	Pack Case	Case Weight	Case Cube
Disco	SP1210Brillo	Brillo®	4" x 4"	Box	12/10	10.00 lbs.	1.080
Disco	SP1210	Generic	4" x 4"	Poly bag	12/10	10.00 lbs.	1.080
Disco	SP20	Generic	4" x 4"	Poly bag	1/20	2.50 lbs.	0.370
Glit	29404	Brillo®	4" x 4"	Box	12/10	12.20 lbs.	1.255
Glit	29405	Generic	4" x 4"	Poly bag	12/10	11.60 lbs.	1.078



Scratch Resistant

WSP15



NSP65MD

WALNUTPAD® SOAP PAD

The WalnutPad® Soap Pad lasts four times longer than a steel wool pad and is completely scratch resistant. It also won't rust or corrode. The pad is filled with a specially formulated grease cutting soap. Use on pots and pans, cooking utensils, baked-on deposits, ovens and sinks. USDA accepted.

Brand	Item Number	Size	Pack Case	Case Weight	Case Cube
Disco	WSP15	3 1/2" x 3 1/2"	1/15	0.75 lbs.	0.180

NYLON SOAP PAD

This pad won't rust or corrode, and is filled with a specially formulated grease cutting soap. Use on pots and pans, cooking utensils, baked-on deposits, ovens and sinks. USDA accepted.

Brand	Item Number	Size	Pack Case	Case Weight	Case Cube
Disco	NSP65MD	3 1/2" x 3 1/2"	6/5	1.58 lbs.	0.320

Scrubbers

STAINLESS STEEL SCRUBBERS

Scrubbers are made of high-grade stainless steel with four-sided strands, giving four cleaning edges to handle the toughest jobs. Because each scrubber is made of a single strand of stainless steel, they will not tear or splinter. Will not rust or corrode.

"300" SERIES - PREMIUM GRADE

Manufactured from "300" series high quality stainless steel (18/8). Great for highly aggressive cleaning jobs when scratching is not an issue.

Brand	Item Number	Size	Pack Case	Case Weight	Case Cube
Disco	D100	50 gm (1.75 oz.)	6/12	8.96 lbs.	0.910
Disco	D100/12	50 gm (1.75 oz.)	1/12	1.60 lbs.	0.130
Disco	D200	35 gm (1.25 oz.)	6/12	6.60 lbs.	0.910

"400" SERIES - HIGH GRADE

Manufactured from less expensive "400" series wire construction. This scrubber has effective properties for the removal of baked-on deposits and other medium duty jobs.

Brand	Item Number	Size	Pack Case	Case Weight	Case Cube
Disco	D104	50 gm (1.75 oz.)	6/12	8.96 lbs.	0.910
Disco	D104/12	50 gm (1.75 oz.)	1/12	1.60 lbs.	0.130
Disco	D204	35 gm (1.25 oz.)	6/12	6.60 lbs.	0.910
Disco	D204/12	35 gm (1.25 oz.)	1/12	1.20 lbs.	0.130



KURLY KATE® STAINLESS STEEL SCRUBBER

The Kurly Kate® line of stainless steel scrubbers feature both a 50 gram and 35 gram scrubber made from "400" series wire. Each scrubber is individually packaged in a printed bag with a peg hole for retail display.

Brand	Item Number	Size	Pack Case	Case Weight	Case Cube
Disco	6375650	50 gm (1.75 oz.)	6/12	8.96 lbs.	1.230
Disco	6275630	35 gm (1.25 oz.)	12/12	13.20 lbs.	1.230



BRASS SCRUBBER

A soft tempered brass wire scrubber that is easy on the hands. Scrubber is made of one continuous strand of wire. Will not corrode, rust or splinter. Can be used with detergent or other cleaning solutions. Easily recognized by its gold color.

Brand	Item Number	Size	Pack Case	Case Weight	Case Cube
Disco	D300	35 gm (1.25 oz.)	6/12	6.45 lbs.	0.910
Disco	D400	50 gm (1.75 oz.)	6/12	9.25 lbs.	0.910



KURLY KATE® BRASS SCRUBBER

Another product in the Kurly Kate® line of scrubbers. This 50 gram scrubber is made from a soft tempered brass wire (gold in color) that is easy on the hands. Can be used with detergent or other cleaning solutions. Each scrubber is individually packaged in a printed bag with a peg hole for retail display.

Brand	Item Number	Size	Pack Case	Case Weight	Case Cube
Disco	7380550	50 gm (1.75 oz.)	6/12	9.25 lbs.	0.750



COPPER MESH SCRUBBER

Manufactured from pure copper ribbon, these scrubbers are ideal for safely cleaning soft metals such as aluminum, copper, stainless steel, plated and tinned surfaces. Not recommended for use on fine china, plastics, or painted surfaces.

Brand	Item Number	Size	Pack Case	Case Weight	Case Cube
Disco	CM	50 gm (1.75 oz.)	6/12	9.40 lbs.	0.960
Disco	CM24	18 gm (0.65 oz.)	6/24	7.00 lbs.	0.970



POWER SCRUB - RED

Large plastic scrubber for removing food particles on china, stainless steel, Teflon® and Silverstone® surfaces. Excellent for removing melted cheese from dishes without scratching glaze. Rinses clean for many uses.

Brand	Item Number	Size	Pack Case	Case Weight	Case Cube
Disco	PS46R	18 gm (0.65 oz.)	4/6	1.04 lbs.	0.560



*Teflon® & Silverstone® are registered trademarks of DuPont®.

Hats, Caps & Nets



DELUXE CHEF HAT

Classically-styled disposable chef hat comes fully formed. Air vent system and sweatband prevents condensation and heat build-up. Adjustable headband.

Brand	Item Number	Size	Color	Pack Case	Case Weight	Case Cube
Disco	DCH-7	7" high	○ White	1/12	2.12 lbs.	1.260
Disco	DCH-9	9" high	○ White	1/12	2.28 lbs.	1.260
Disco	DCH-10	10" high	○ White	1/12	2.28 lbs.	1.260
Disco	*DCH-12	12" high	○ White	1/10	2.58 lbs.	1.790

* Indicates a special order item.



FLUTED CHEF HAT

Fluted style corrugated chef hat comes fully formed and offers an economical alternative. Air vent system ensures cool comfort. Adjustable headband.

Brand	Item Number	Size	Color	Pack Case	Case Weight	Case Cube
Disco	FCH-7	7" high	○ White	1/12	2.12 lbs.	1.260
Disco	FCH-9	9" high	○ White	1/12	2.28 lbs.	1.260
Disco	FCH-10	10" high	○ White	1/12	2.58 lbs.	1.360



EUROPEAN CHEF HAT

Traditional European styling comes folded flat for efficient storage. Available in white and the popular houndstooth design. Air vents ensure cool comfort. Adjustable headband.

Brand	Item Number	Size	Color	Pack Case	Case Weight	Case Cube
Disco	ECH-9W	9" high	○ White	5/50	15.00 lbs.	1.600
Disco	ECH-9HT	10" high	● Houndstooth	5/50	15.00 lbs.	1.600



OVERSEAS CAP

Paper crown extends over band for a smart, sanitary look. White headband with linen finish has permanent size adjustment. Pressure-sensitive tab locks cap size. White caps are standard. *Available in blue, green or red stripe. Can be custom printed.

Brand	Item Number	Color	Pack Case	Case Weight	Case Cube
Disco	OC100	○ White	10/100	33.40 lbs.	3.400

* Indicates a special order item.



ROUND CROWN

Sporty low-profile cap with tissue paper crown. Ideal for working around food processing and handling, industrial or institutional environments. White caps are standard. *Available with blue, green or red stripe.

Brand	Item Number	Color	Pack Case	Case Weight	Case Cube
Disco	RC100	○ White	10/100	30.00 lbs.	1.810

* Indicates a special order item.

HAIR NETS

Stylish, lightweight nylon hair nets satisfy both food safety and sanitary concerns. Fire retardant, they're designed to keep hair safely and beautifully contained. Available in white, black and brown to match worker's hair color.

Brand	Item Number	Denier	Color	Pack Case	Case Weight	Case Cube
Disco	HN500W	15	○ White	10/144	3.80 lbs.	0.410
Disco	HN500BK	15	● Black	10/144	3.80 lbs.	0.410
Disco	HN500DBR	15	● Brown	10/144	3.80 lbs.	0.410
Disco	*HN300W	40	○ White	10/144	3.80 lbs.	0.410
Disco	HN300BK	40	● Black	10/144	3.80 lbs.	0.410
Disco	HN300DBR	40	● Brown	10/144	3.80 lbs.	0.410

* Indicates a special order item.



15 - Denier

40 - Denier

KORONETS

These caps are the standard used in food processing and safety/industrial settings. The honeycomb net design has a 1/8" aperture for more complete hair containment. Made from polyester that's strong, yet economical.

Brand	Item Number	Size	Color	Pack Case	Case Weight	Case Cube
Disco	K2018W	18"	○ White	10/100	8.00 lbs.	0.690
Disco	K2020W	20"	○ White	10/100	9.00 lbs.	0.690
Disco	K2024W	24"	○ White	10/100	11.00 lbs.	0.690
Disco	K2018BR	18"	● Brown	10/100	8.00 lbs.	0.690
Disco	K2020BR	20"	● Brown	10/100	9.00 lbs.	0.690
Disco	K2024BR	24"	● Brown	10/100	11.00 lbs.	0.690



Honeycomb net design.

INSTITUTIONAL / BOUFFANT CAP

Attractive cloth-like non-woven caps in two sizes. Latex free elastic for a snap-on fit. White caps are standard. *Available in blue or green as a special order.

Brand	Item Number	Size	Color	Pack Case	Case Weight	Case Cube
Disco	BI400	21" - Large	○ White	10/100	9.25 lbs.	2.300
Disco	*BIX-400	24" - X-Large	○ White	10/100	12.00 lbs.	2.370

* Indicates a special order item.



BEARD PROTECTOR / NET

Essential if bearded workers are employed in your manufacturing or food processing operation. Keeps beard hair from creating problems in finished products.

Brand	Item Number	Color	Pack Case	Case Weight	Case Cube
Disco	BP400	○ White	10/100	5.00 lbs.	0.410



Wood Expendables

WOOD EXPENDABLES

We offer a full line of wooden expendables for all of your food service needs.

Brand	Item Number	Item	Size	Pack Case	Case Weight	Case Cube
Disco	WCS	Coffee Stirrer	5 1/2"	10/1000	11.40 lbs.	0.420
Disco	775WCS	Coffee Stirrer	7 1/2"	10/500	15.00 lbs.	0.620
Disco	RF	Regular Frills	3"	10/1000	4.30 lbs.	0.530
Disco	CF	Club Frills	4"	10/1000	7.16 lbs.	0.810
Disco	CPM	Parasols, Cocktail	4"	50/144	19.00 lbs.	1.770
Disco	WS	Wood Skewer - 4 1/2"	4 1/2"	10/1000	22.60 lbs.	0.920
Disco	WS10	Wood Skewer - 10"	10"	3/1000	14.00 lbs.	0.570
Disco	6B	Bamboo Skewer	6"	12/16/100	28.10 lbs.	1.120
Disco	8B	Bamboo Skewer	8"	12/16/100	40.00 lbs.	1.340
Disco	10B	Bamboo Skewer	10"	12/16/100	58.90 lbs.	2.180
Disco	12B	Bamboo Skewer	12"	12/16/100	77.00 lbs.	2.710
Disco	CSW	Chopsticks Bamboo	9"	10/100	25.00 lbs.	0.970

WCS

775WCS

RF

CF

CPM

WS

WS10

6B

8B

10B

12B

CSW

RH24

IW12

SWM12

WSP

AF

MF



Toothpicks

TOOTHPICKS

We offer a full line of toothpicks and related products including mint flavored picks and decorative flag picks.

Brand	Item Number	Item	Size	Pack Case	Case Weight	Case Cube
Disco	RH24	Round Hotel Pick	2 1/2"	24/800	5.75 lbs.	0.210
Disco	IW12	Individually Wrapped Pick	2 1/2"	12/1000	5.00 lbs.	0.420
Disco	SWM12	Individually Wrapped Pick-Mint	2 1/2"	12/1000	5.00 lbs.	0.420
Disco	WSP	Sandwich Pick	3 1/2"	4/12/750	28.25 lbs.	0.820
Disco	AF	American Flag Pick	2 1/2"	50/144	6.00 lbs.	0.560
Disco	MF	Mexican Flag Pick	2 1/2"	100/144	10.00 lbs.	0.780



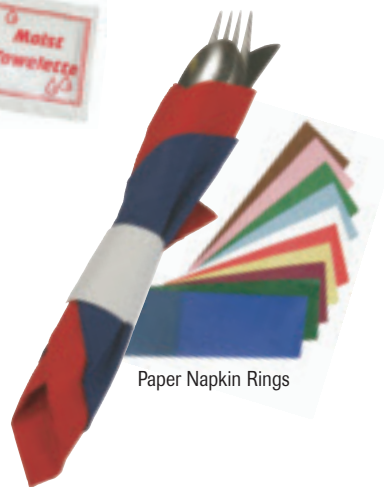
Paper Expendables

PAPER EXPENDABLES

With eight different sizes of doilies to choose from we can fill every catering need. Plus our moist towelettes are popular in food service, casinos and other areas where convenient clean-up is needed. Our paper napkin rings are available in ten separate colors each with the popular cohesive backing for easy removal from the napkin.

Brand	Item Number	Item	Pack Case	Case Weight	Case Cube
Disco	L4	4" Doilies	10/1000	11.70 lbs.	0.690
Disco	L5	5" Doilies	10/1000	18.14 lbs.	1.030
Disco	L6	6" Doilies	10/1000	25.50 lbs.	1.380
Disco	L8	8" Doilies	10/500	24.00 lbs.	1.400
Disco	L10	10" Doilies	10/500	34.00 lbs.	2.090
Disco	L12	12" Doilies	10/500	44.50 lbs.	2.920
Disco	*L14	14" Doilies	5/500	31.00 lbs.	1.490
Disco	*L16	16" Doilies	16/125	31.00 lbs.	1.490
Disco	102	Moist Towelettes	1/1000	8.01 lbs.	0.500
Disco	NPR-W	Paper Napkin Rings (White)	1/4000	3.70 lbs.	0.090
Disco	*NPR-G	Paper Napkin Rings (Green)	1/4000	3.70 lbs.	0.090
Disco	*NPR-P	Paper Napkin Rings (Pink)	1/4000	3.70 lbs.	0.090
Disco	*NPR-B	Paper Napkin Rings (Blue)	1/4000	3.70 lbs.	0.090
Disco	*NPR-Y	Paper Napkin Rings (Yellow)	1/4000	3.70 lbs.	0.090
Disco	NPR-R	Paper Napkin Rings (Red)	1/4000	3.70 lbs.	0.090
Disco	*NPR-BN	Paper Napkin Rings (Brown)	1/4000	3.70 lbs.	0.090
Disco	NPR-BG	Paper Napkin Rings (Burgundy)	1/4000	3.70 lbs.	0.090
Disco	NPR-NB	Paper Napkin Rings (Navy Blue)	1/4000	3.70 lbs.	0.090
Disco	NPR-HG	Paper Napkin Rings (Hunter Green)	1/4000	3.70 lbs.	0.090

* Indicates a special order item.



Plastic Expendables

PLASTIC EXPENDABLES

Our plastic expendables line features aprons, bibs, steak markers, picks, stirrers and a full line of gloves.

Brand	Item Number	Item	Size	Color	Pack Case	Case Weight	Case Cube
Disco	SMW	Steak Marker-Well	2 ⁷ / ₈ "	Black	5/1000	6.06 lbs.	0.360
Disco	SMMW	Steak Marker-Medium Well	2 ⁷ / ₈ "	Yellow	5/1000	6.06 lbs.	0.360
Disco	SMM	Steak Marker-Medium	2 ⁷ / ₈ "	White	5/1000	6.06 lbs.	0.360
Disco	SMMR	Steak Marker-Medium Rare	2 ⁷ / ₈ "	Pink	5/1000	6.06 lbs.	0.360
Disco	SMR	Steak Marker-Rare	2 ⁷ / ₈ "	Red	5/1000	6.06 lbs.	0.360
Disco	SP	Sword Pick	3"	5 Assorted Colors	10/1000	13.94 lbs.	0.970
Disco	AP	Arrow Pick	3 ¹ / ₂ "	5 Assorted Colors	10/1000	9.18 lbs.	1.400
Disco	SS5	Sip Stix	5"	Red/White	5/1000	4.50 lbs.	0.630
Disco	SS8	Sip Stix	8"	Red/White	5/1000	6.00 lbs.	1.670



FOOD SERVICE SUPPLIES

PLASTIC EXPENDABLES (Continued)

Brand	Item Number	Item	Size	Color	Pack Case	Case Weight	Case Cube
Disco	A2846DLX	Apron Deluxe, 1.375 mil poly	28" x 46"	White	5/100	28.00 lbs.	0.300
Disco	A2442	Aprons, 1 mil Poly	24" x 42"	White	10/100	23.26 lbs.	0.990
Disco	A2846	Aprons, 1 mil Poly	28" x 46"	White	10/100	25.24 lbs.	1.050
Disco	*303D	Lobster Bib	15 1/2" x 20"	White w/Print	1/500	6.20 lbs.	0.260
Disco	08D	Child Bib w/ food catcher	15 1/2" x 20"	White	1/500	3.94 lbs.	0.280
Disco	DBP	Doggie Bag, Poly	7" x 12"	White w/Print	1/1000	4.70 lbs.	0.340

* Indicates a special order item.



A2846DLX



A2442



A2846



303D



08D



DBP

GLOVES

Brand	Item Number	Item	Size	Color	Pack Case	Case Weight	Case Cube
Disco	*IMP-S	Poly Gloves	Small	Clear	10/10/100	34.50 lbs.	1.710
Disco	IMP-M	Poly Gloves	Medium	Clear	10/10/100	35.00 lbs.	1.460
Disco	IMP-L	Poly Gloves	Large	Clear	10/10/100	39.00 lbs.	1.660
Disco	*LAT-S10	Latex Gloves	Small	Natural	10/100	16.20 lbs.	0.910
Disco	LAT-M10	Latex Gloves	Medium	Natural	10/100	17.90 lbs.	0.950
Disco	LAT-L10	Latex Gloves	Large	Natural	10/100	19.50 lbs.	0.950
Disco	*YFLG-S10	Latex Dish Washing Gloves / Flock Lined	Small	Yellow	12/12	21.00 lbs.	1.260
Disco	YFLG-M10	Latex Dish Washing Gloves / Flock Lined	Medium	Yellow	12/12	22.00 lbs.	1.260
Disco	YFLG-L10	Latex Dish Washing Gloves / Lined	Large	Yellow	12/12	23.00 lbs.	1.260

* Indicates a special order item.



IMP-L



LAT-L10



YFLG-L10

